

"LET THERE BE LIGHT"

THE
"BRITELITE"

The New Central Draught Incandescent Kerosene Mantle Lamp

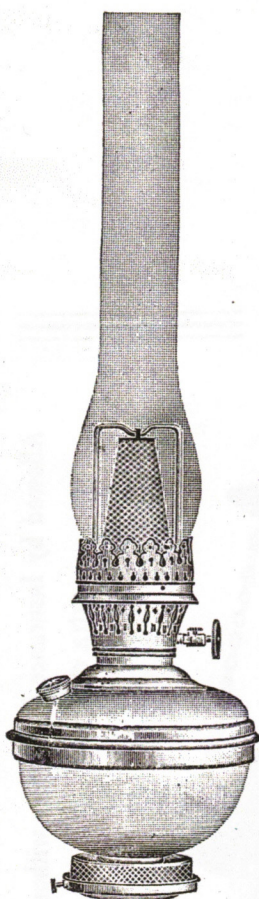
MADE IN THE UNITED STATES [Patented]

THE BEST AND CHEAPEST LIGHT IN THE WORLD

BURNS A MANTLE OF SPECIAL DURABILITY

SIMPLE - SAFE - SURE

IT CANNOT EXPLODE - 100 CANDLE POWER - BURNS 6 HOURS FOR 1 CENT



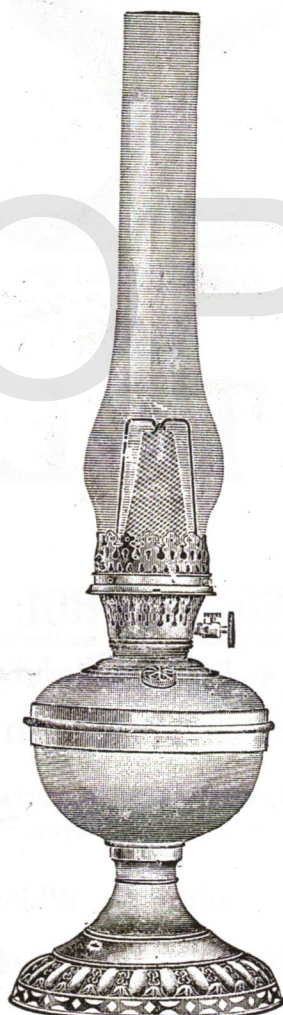
Polished Brass Hanging
or Bracket Lamp

Furnished with best grade
German Mantle.

Burners have no soldered
parts to melt and will out-
wear all others.

Has round wick preventing
unevenness.

Uses a regular stock chim-
ney obtainable from any
dealer.

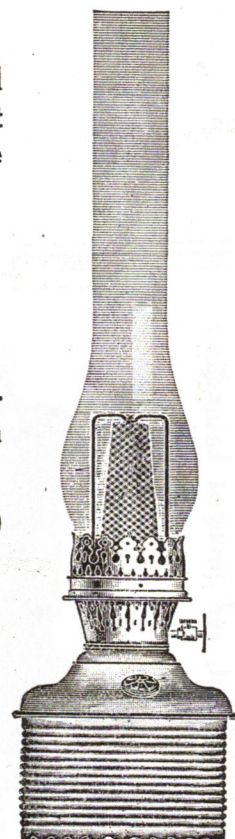


Brass or Nickel Table Lamp
Complete with tripod

Is less liable to smoke and
is less affected by draught
than any other Kerosene
Mantle Lamp.

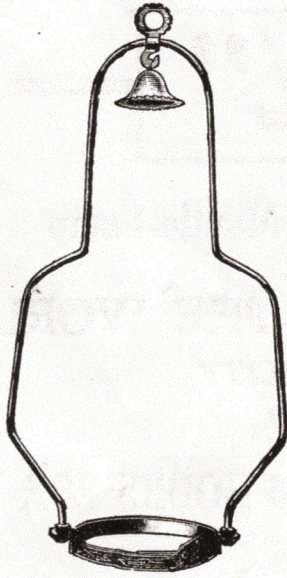
The most perfect and eco-
nomical Kerosene Lamp in
existence.

Consumes 1 quart oil in 20
hours.

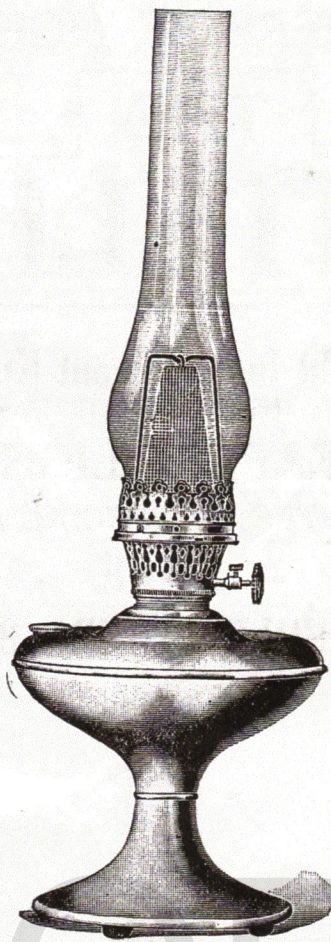


Pol. Brass Oil Fount fits any
fancy base or Hanging Lamp

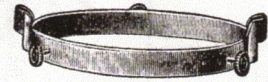
Six times as bright as the ordinary Central Draught Lamp, ten times as bright as electricity at one-tenth the cost, 15% brighter than Incandescent gas light at one-sixth the cost. Can be turned low and will not smell or smoke. A safe lamp to burn all night. The wick needs no trimming. Will not heat the oil fount. Fit up your home or store with the "BRITELITE" and divide your light bill by six, thus you can save the price of the lamp in a few months.



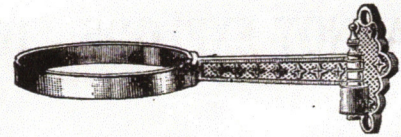
Brass Harp and Bell for Store Lamp
Price 35c



COLONIAL PARLOR LAMP



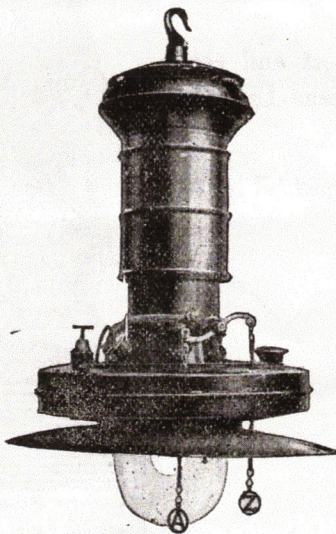
Brass Harp Crown for 14 inch Dome Shade
Price 25c



Brass Bracket for Store Lamp
Price 35c

THE "BRITELITE"

Simplest, Safest, and Strongest Lamp Made



INVERT No. 1.
For Outdoor Use. Black Enamel with Reflector

INVERTED ALCOHOL LAMPS

Consumes 1 qt. Denatured Alcohol in 12 hours

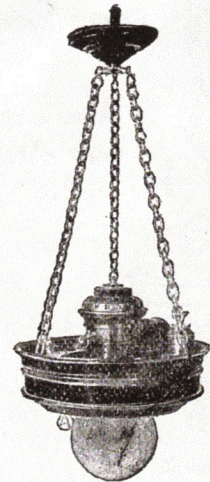
NO BURNING WICK NO PRESSURE

SMOKELESS - SHADOWLESS

200 C. P. (PATENTED)

Gives a Steady Pure White Light

The Perfect Light for Indoor or Outdoor lighting



INVERT No. 5.
STEEL FINISH

Allowed by Insurance Companies without extra charge.

THE MINNESOTA TRADING CO.

UNION BUILDING
42 South 3rd St.

MINNEAPOLIS, - MINN.

NORTHWESTERN
DISTRIBUTERS

Apply for State or County Rights

Dealers in Denatured Alcohol

THE CONNECTICUT TRADING CO.

MANUFACTURERS' AGENTS

SOLE IMPORTERS AND UNITED STATES DISTRIBUTERS OF THE

"PRACTICUS"

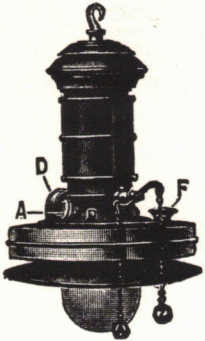
100 C. P. INCANDESCENT KEROSENE LAMPS

"SINUMBRA"

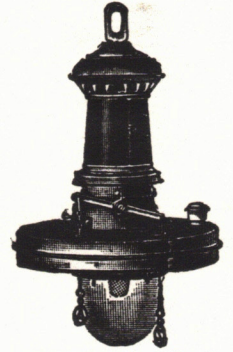
220 C. P. INCANDESCENT INVERTED ALCOHOL LAMPS

WONDER ALCOHOL STOVES

KEROSENE ARC LIGHTS 300-2500 C. P.



SINUMBRA NO. 1
FOR OUTDOOR USE



SINUMBRA NO. 2
FOR INDOOR USE

TELEPHONE 20

CLINTON, CONN. 6/23/08

Meerdink & Willets,
Watts Flats, N.Y..

Gentlemen:

Replying to yours of June 18th concerning alcohol lamps we would say that your esteemed order #921 has been forwarded.

The small alcohol burner consumes one quart of denatured alcohol in 16 hours; the large burner which fits #2 or #3 collar consumes one quart in 12 hours, and the Sinumbra lamps one quart in 12 hours. This is cheaper than gas or central draught lamps and the light is excellent. The lamps will not smoke under any circumstances. In fact for public places alcohol lamps are far superior to kerosene, gasoline or any other fluid for lighting.

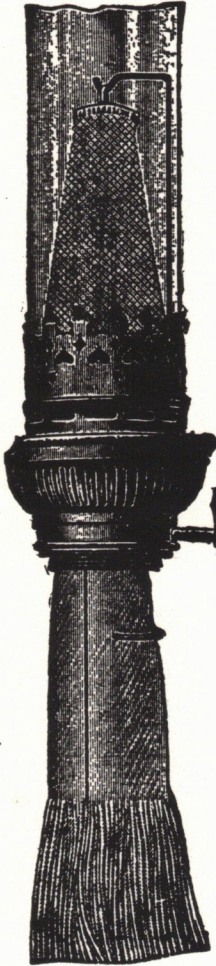
We would suggest that you place a trial order with us for one of each of the three alcohol burners at \$1.75, one two burner stove \$7.00 less 1/3, one combined heater and spoker at \$5.00 less 1/3, one Sinumbra #1 at \$9.50, one #2 at \$8.00 one Sinumbra #5 at \$9.50. We guarantee these lamps to be all we claim them to be.

Awaiting your further favors, we remain,

Yours truly,

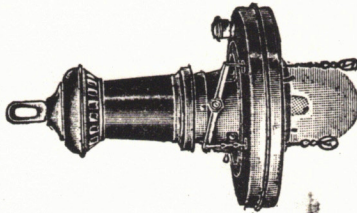
THE CONNECTICUT TRADING CO.

Chas. B. Mykoff
Manager.



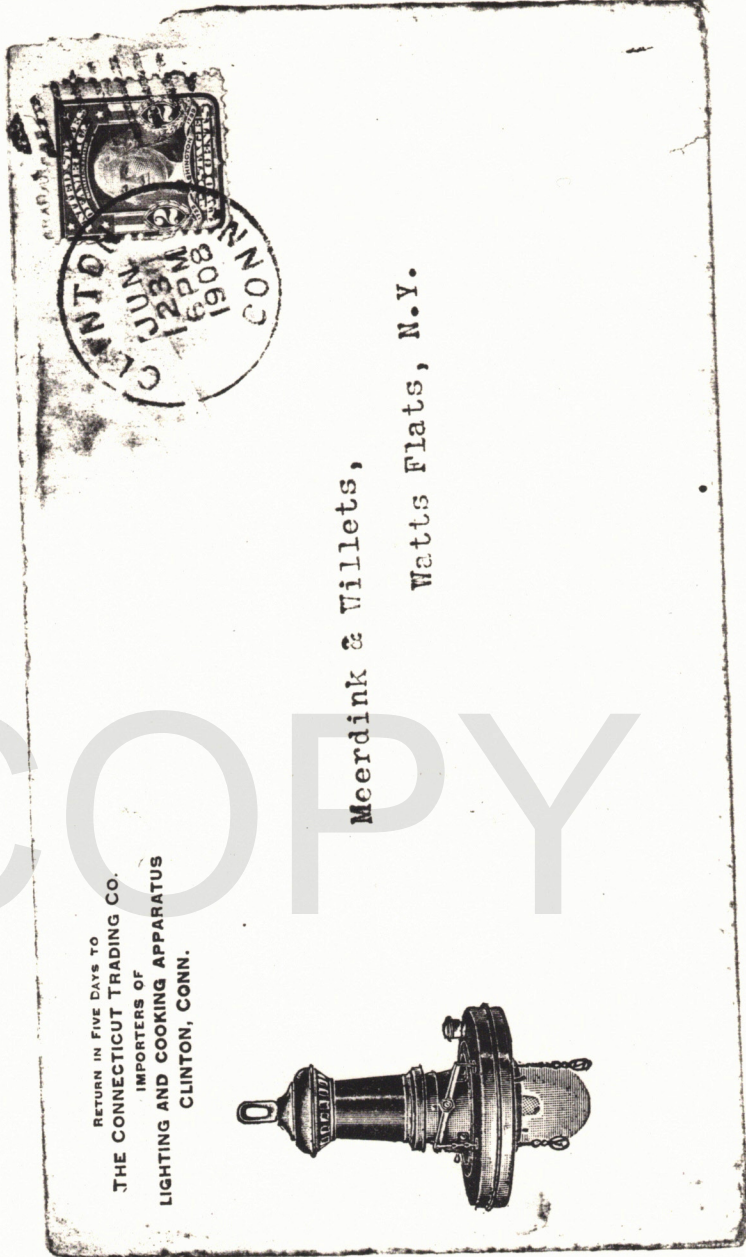
PRACTICUS

RETURN IN FIVE DAYS TO
THE CONNECTICUT TRADING CO.
IMPORTERS OF
LIGHTING AND COOKING APPARATUS
CLINTON, CONN.



Meerdink & Villets,

Watts Flats, N.Y.



“THE GREATEST INVENTION OF THE AGE”

THE NEW

PRACTICUS

INCANDESCENT KEROSENE LAMP

IS THE

BEST AND CHEAPEST LIGHT IN THE WORLD

IT BURNS A MANTLE

OF SPECIAL DURABILITY

SIMPLE * SAFE * SURE

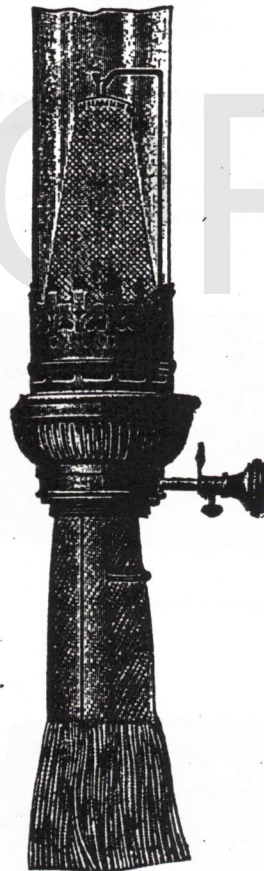
IT CAN NOT EXPLODE

100 CANDLE POWER 6 HOURS FOR 1 CENT

* * * * *

Six times as bright as a central draught lamp, at 1-6th the cost. A central draught lamp costs \$12 a year to maintain—the “Practicus” costs \$2.00. Ten times as bright as electricity at 1-10th the cost, 15 per cent brighter than incandescent gas light at 1-6th the cost. You can save the price of a lamp in a few months.

* * * * *



Can be turned low and will not smell or smoke—a splendid lamp to burn all night. Does not heat up like a central draught lamp. The wick needs no trimming and never wears out. It will not heat the oil fount. Fit up your house or store with the “Practicus” and divide your light bill by 6.

Chimneys are German Jena class and will not break with heat or water.

**THE CONNECTICUT TRADING CO.,
CLINTON, CONN.**

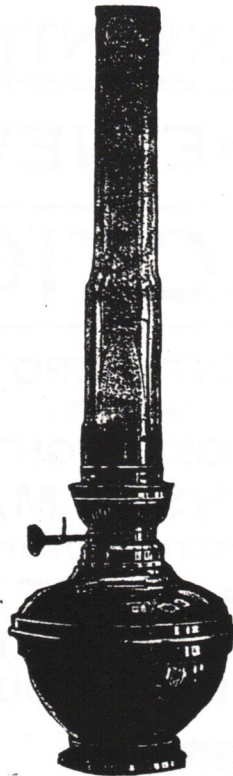
SOLE DISTRIBUTERS NEW ENGLAND STATES

TELEPHONE CONNECTION

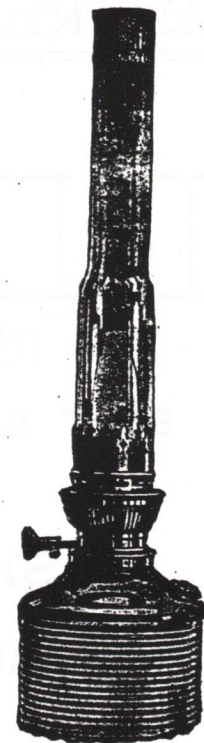
AGENTS WANTED FOR OPEN TERRITORY



Pol. Brass Table Lamp
Complete with Tripod or Globe Ring
Price \$6.00



Pol. Brass (6 inch) Store or Factory Lamp
Complete as above
Can be screwed on any gas bracket
Price \$5.50



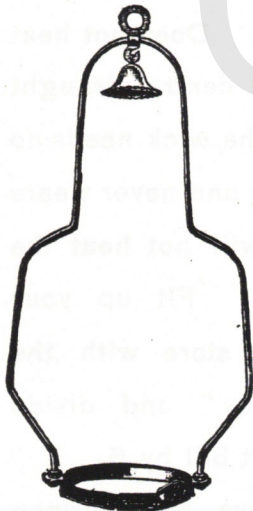
Pol. Brass Oil Fount (5 inch)
Fits any Fancy Vase or Hanging Lamp
Complete with Tripod or Globe Ring
Price \$5.00

Mantles, - - 30c.
Chimneys, - - 30c.

18 Inch Heavy Tin Shades
Price 30c. Each

14 Inch Heavy German Opal Dome
Shades. Price \$1.00 Each

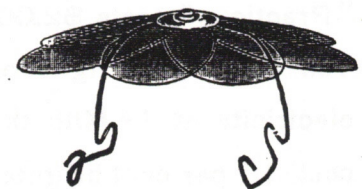
10 Inch Heavy German Opal Shades
Price 35c. Each



Brass Harp and Bell for Store Lamp
Price 40c.



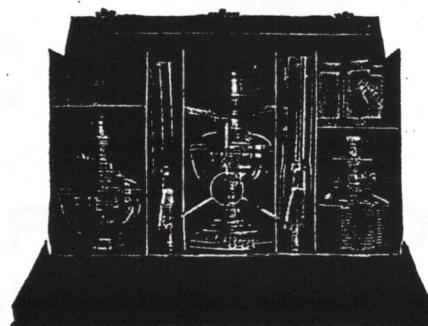
Agent's Case - Closed



Mica Canopy, each one Packed in a Box
Price 20c. Each



4 Inch Brass Globe Holder
Price 20c. Each



Agent's Case - Open
Made of Black Fibre - Nickel Trimmings
Without Contents
Price \$3.50 Net



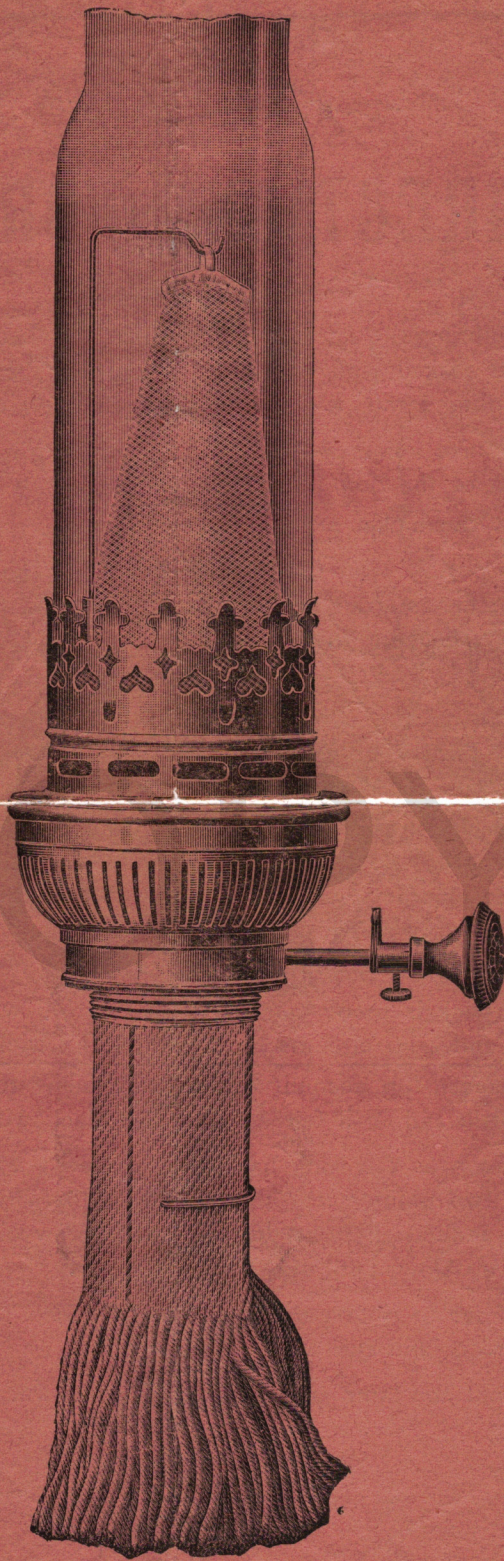
Brass Tripod for 10 Inch Shades
Price 20c. Each



Brass Harp Crown
for 14 Inch Dome Shade
Price 30c.



Brass Bracket for Store Lamp
Price 40c.



185
23
60

DIRECTIONS FOR USE.

Before lighting the lamp the first time it is necessary that the wick is well soaked with kerosene. Therefore screw burner on two hours before lighting lamp, which must be well filled with kerosene oil.

Now take chimney holder off burner by giving it a turn, take the mantle out of the box BY THE CORD (do not touch the mantle) and hang it on the nickel rod.

Now put the rod firmly in the slot on the burner and see that the mantle hangs straight over the burner cap. (The nickel rod, can, if necessary, be bent to either side.)

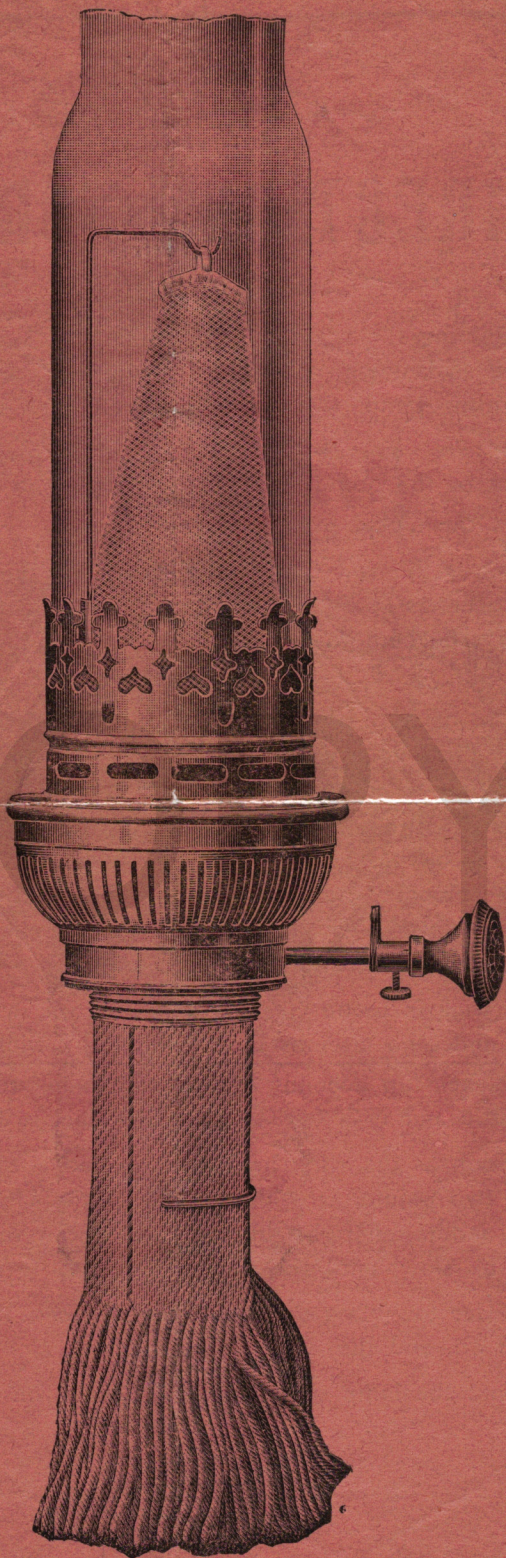
Now burn off your mantle with a match, lighting it from the top, and put the chimney on over the mantle before putting chimney holder on lamp. Then light your wick but see that only a very small flame is visible, and never turn wick higher than top of burner cap. See that the wick burns evenly all around. Now place your chimney holder and chimney on the lamp and turn to the right till you strike the notch, so that the chimney holder is thoroughly secured in the notches. Screw the wick up very slowly and be very careful not to screw it too high: in a few seconds the light will increase.

The wick is to be cleaned with a brush, which is found in every box, and under no circumstances should the wick be cut. Should the mantle blacken, on account of the wick being turned too high, turn it down a little and in a few seconds the black will disappear.

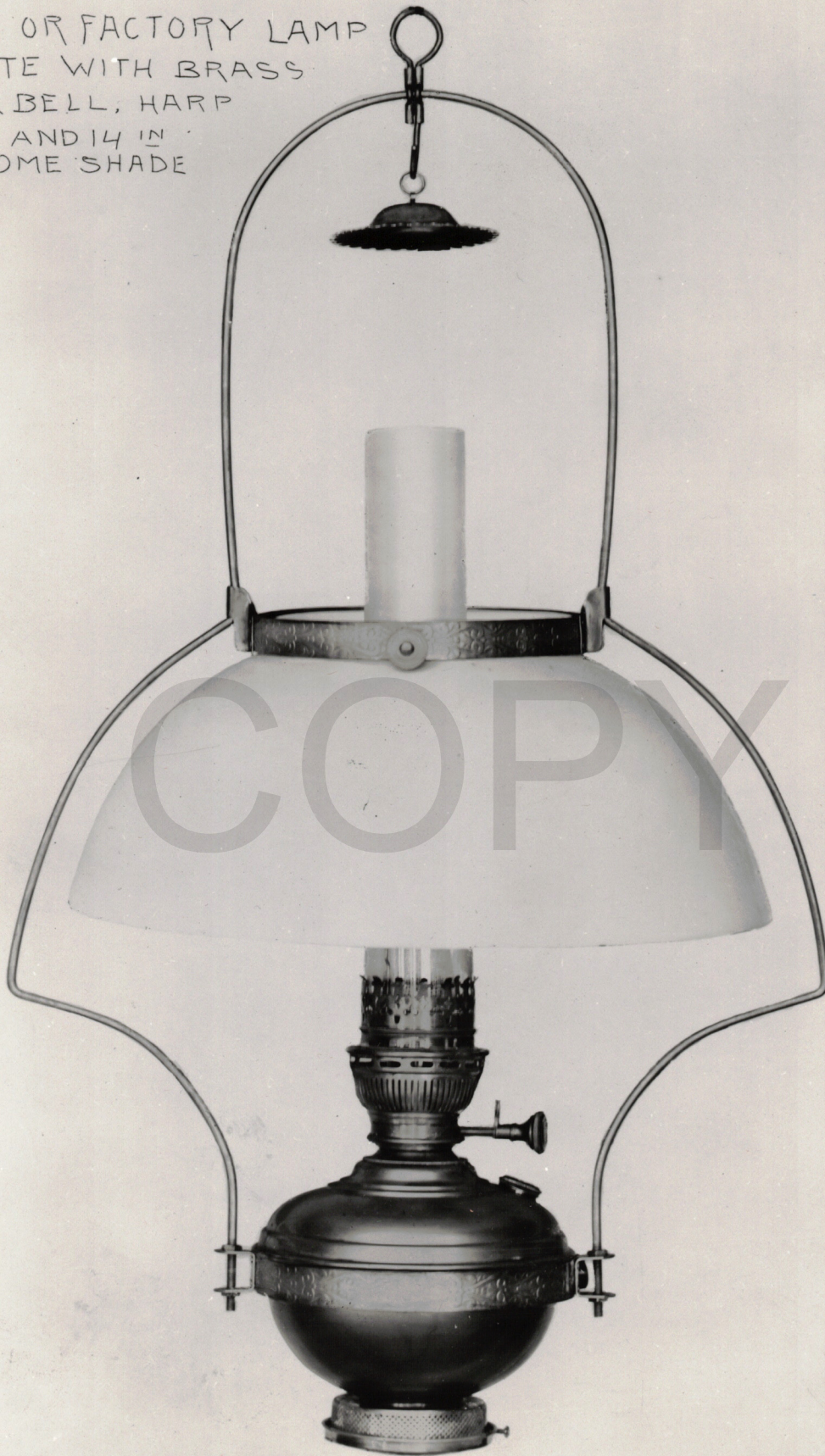
As soon as the wick has been regulated to the correct height, bring the two pointers together found on the wick key, which regulates the wick, and fasten tight by the small screw on the side. When lighting turn up slow, until the pointers meet.

In order to obtain the best results, keep the lamp always well filled with oil, and the wick clean.

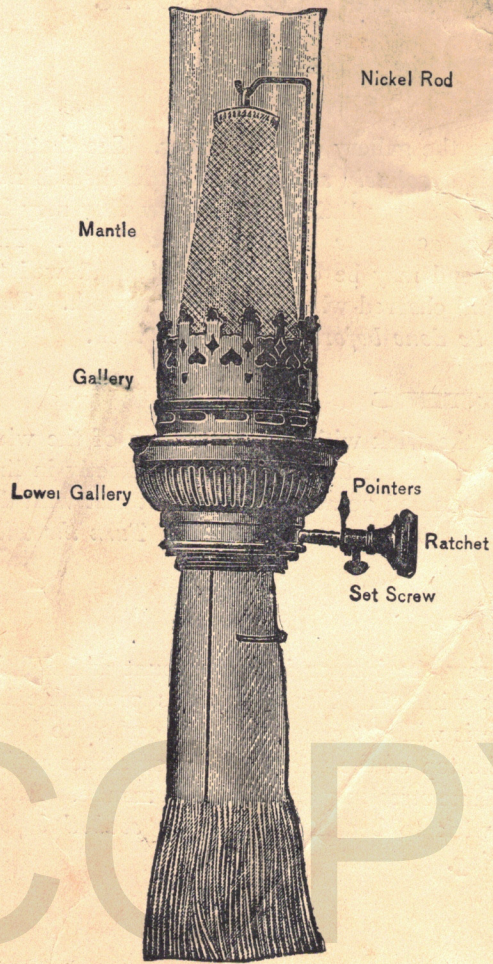
To put the lamp out, turn the wick down.



STORE OR FACTORY LAMP
COMPLETE WITH BRASS
HARP & BELL, HARP
CROWN AND 14" IN
OPAL DOME SHADE



The "PRACTICUS"
Incandescent Kerosene Burner.



COPY

P. 5
3870

70P

How to Use It

WICK

Take the gallery off the burner. See that the wick is *absolutely smooth*—no little threads nor lumps. If only little threads show they may be cut off, *otherwise do not cut the wick*. The upper end may be dipped in oil and allowed to burn till charred when it will rub smooth. *This must be done before soaking the wick.*

POINTERS

Set the wick with the inner edge of the wick tube. Then set the loose pointer exactly in line with the fixed pointer and screw it fast with the set screw to the ratchet spindle. *Turn the wick down.*

OIL

Screw the burner into the fount and fill the fount with oil. The best oil is preferable because it will not cause so much carbon to lodge on the top of the wick, which sometimes makes the flame streak up and black the mantle. Allow the wick to become *thoroughly soaked before lighting.*

MANTLE and CHIMNEY

Take the mantle out of the box by the string. Place the nickel rod in the little socket in the gallery. Hang the mantle on the hook and lower it till the bottom of the mantle is at least $\frac{1}{4}$ in. below the top of the gallery cap. *See that the mantle hangs exactly in the center.* Then burn off the coating by lighting at the top. Put the chimney in the gallery. *Care must be taken not to press the mantle with the fingers.*

LIGHTING

Turn the ratchet till the pointers come together; light the wick. Turn it down till only a small flame is visible. Put on the gallery containing mantle and chimney, turning it around until it stops. Let it remain a few seconds and then *turn ratchet slowly till the pointers meet.* The light will soon reach its maximum. *You must watch it occasionally for an hour or so and see that the mantle does not blacken.* By adjusting the flame, properly *setting the pointers and keeping the wick smooth and clean* you will have *no smoke nor smell.* The light may be turned low without emitting any odor. If a buzzing or humming noise is heard which is caused by too much air, lower the mantle little by little till it ceases. Should you *carelessly* smoke the mantle, even till it is solid soot, turn the wick down

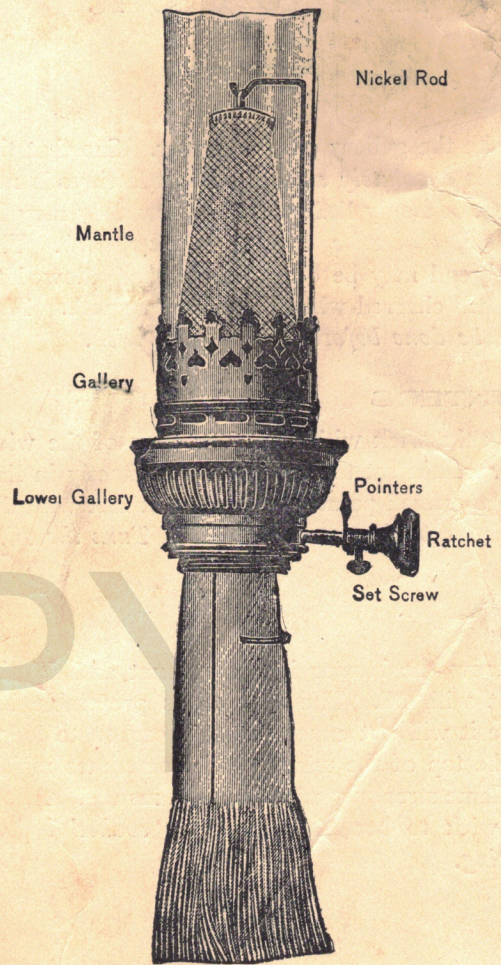
and the mantle will soon become clear. If the light flickers when first turned up, unscrew the lower gallery a trifle and it will become steady at once. After the burner is properly heated, the light will be absolutely steady. If the little center piece should be pushed to one side, or too high, or too low, it will cause the light to burn red on one side. It must be in the center and at the proper height from the wick tube. Keep the lamp filled and the *wick clean*. Remember, *it will smoke if turned too high, or if there are any projections on the wick*. Use the brush to clean the wick. If the carbon is hard, remove it by the wire end of the brush. A *perfect surface* on the top of the wick gives *perfect results*. Follow the *directions carefully* and you will have the most *perfect light* you ever used. We warrant the "Practicus" if directions are followed.

The Mantle Lamp Co.
of America

56 Fifth Ave.

CHICAGO, ILL.

**The "PRACTICUS"
Incandescent Kerosene Burner.**



Bottom

*P5
989*

COLONIAL PARLOR LAMP
TWO STYLES
OLD ENGLISH OR
HIGHLY POLISHED BRASS



COLONIAL PARLOR LAMP
TWO STYLES
OLD ENGLISH OR
HIGHLY POLISHED BRASS



Practus! Practus! Practus!

AT LAST WE HAVE SUCCEEDED IN PLACING BEFORE THE PUBLIC

The Greatest Kerosene Incandescent Burner OF MODERN TIMES

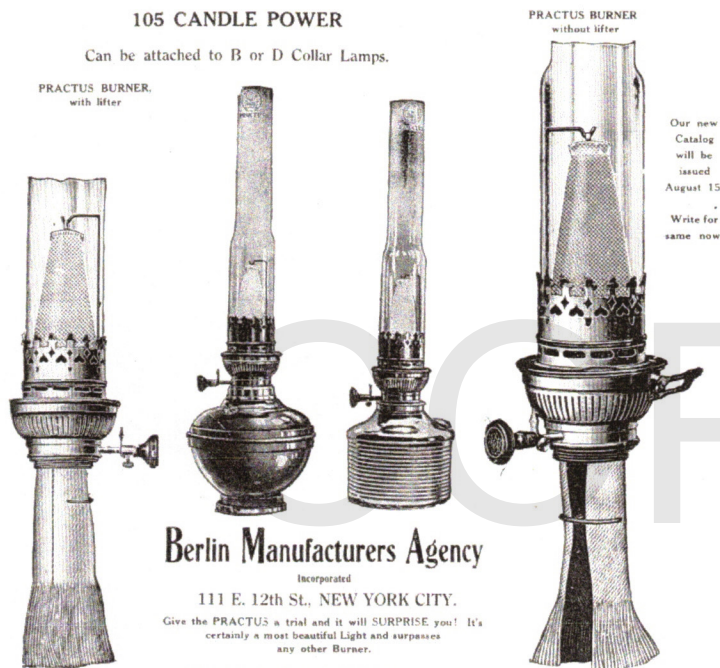
It is beyond question the best Burner in the Market and gives entire satisfaction.

It Gives a BRIGHTER LIGHT than any BURNER in the MARKET

The Mantles are MORE DURABLE than any other make.
No trouble experienced with these Burners.

105 CANDLE POWER

Can be attached to B or D Collar Lamps.



Berlin Manufacturers Agency

Incorporated

111 E. 12th St., NEW YORK CITY.

Give the PRACTUS a trial and it will SURPRISE you! It's certainly a most beautiful Light and surpasses any other Burner.

FIG. 2-59. HFR Berlin Manufacturers' Agency.