

# THE PROOF OF THE PUDDING

What Others Say About Their Lamps.

When you recommend your own goods there is an underlying motive! When they are recommended by others with no reason other than the natural outburst of honest enthusiasm, there is a reason why every thinking person should investigate.

Newton, Ill., Jan. 23, 1909.  
The Mantle Lamp Company of America, Chicago, Ill.  
Dear Sirs—I have had one of your lamps burning in my store for about two months, and I take pleasure in testifying to its efficiency. It is all the more noticeable from the fact that I am burning twenty incandescent electric lights and the lamp makes them look like tallow candles.

Yours very truly,  
C. W. KISER.

De Witt, Ark., Sept. 20, 1909.  
The Mantle Lamp Company of America, Chicago, Ill.  
Dear Sirs—I have been using four of your lamps since last December and have only broken two mantles and two chimneys. I discarded electric lights as I find your lights better and cheaper.

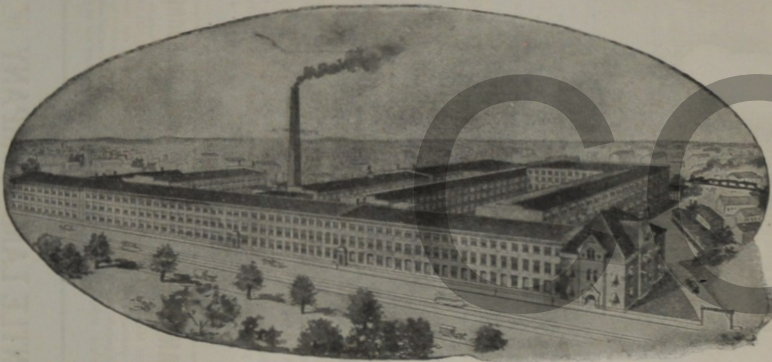
Yours truly,  
ED. BOWERS.

High River, Alberta, Canada, June 21, 1909.  
The Mantle Lamp Co. of America, Winnipeg, Canada.  
Gentlemen—We have disposed of most of the lamps we ordered from you and are getting an immense amount of advertising from them.  
The lamp does all that is claimed for it. In fact, one of our customers says that it burns only one-fourth of the oil that an ordinary house lamp uses.

Yours truly,  
E. E. THOMPSON & CO.

Unionville, Mo., Oct. 12, 1909.  
The Mantle Lamp Company of America, Chicago, Ill.  
Gentlemen—I have been going over some of my territory during the past week to see how those who have been using the "Aladdin" since last fall like them, and I find that they are all perfectly satisfied.

Respectfully,  
H. H. TINSLEY.



THE HOME OF THE ALADDIN LAMP AND SUNBEAM BURNER.

Buenos Aires, Argentine Republic, Sept. 12, 1909.  
The Mantle Lamp Company of America, Chicago, Ill.  
Gentlemen—as we anticipated in our last letter, your "Aladdin" is an excellent affair. We are very willing to undertake the introduction of your lamps which will have a very extensive sale. Gas and electricity are much dearer here than in the States, consequently, the use of lamps is more general and, moreover, your light is far superior to gas or electricity.

Yours truly,  
MASSALIN & CELASCO.

Carlton, Wash., Sept. 27, 1909.  
The Mantle Lamp Company of America, Portland, Ore.  
Gentlemen—Your "ALADDIN" Mantle Lamp is the best in the world. Every family that sees this lamp burn, wants one of them.

Yours truly,  
W. H. CARSLY.

These are but a mere handful of letters picked from our files. We have thousands of such letters from people everywhere. If the ALADDIN Lamp is proving so satisfactory to others, isn't it reasonable to suppose that it will also please you? Read the other side and invest and you will find that your investment will pay dividends of several hundred percent.

ALWAYS WRITE OUR NEAREST OFFICE

The Mantle Lamp Company of America

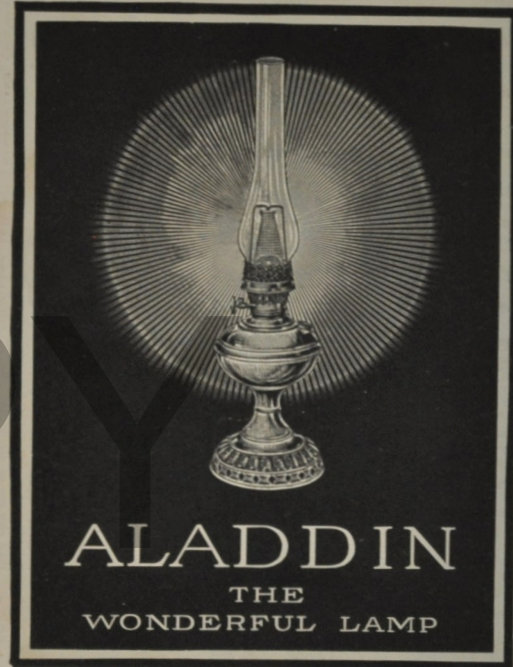
CHICAGO, ILL., 312-320 NORTH MAY ST.

PORTLAND, ORE., 545 FIRST ST.

WATERBURY, CONN., 63 CENTER ST.

WINNIPEG CANADA, 141 BANNATYNE AVE.

# How You Can Get More



## Light at a Lighter Expense

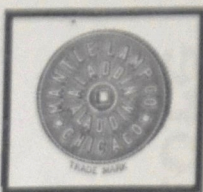
THE MANTLE LAMP COMPANY  
OF AMERICA

CHICAGO, ILL. PORTLAND, ORE. WATERBURY, CONN. WINNIPEG, CAN.

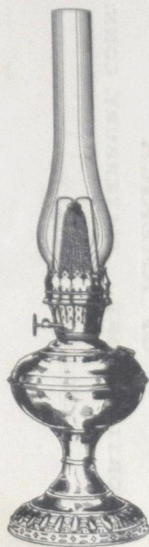
For Sale By



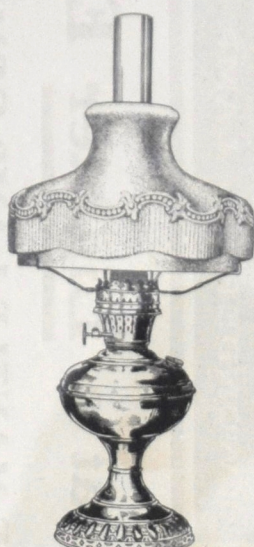
THE NEW "ALADDIN"  
IMPROVED  
INCANDESCENT



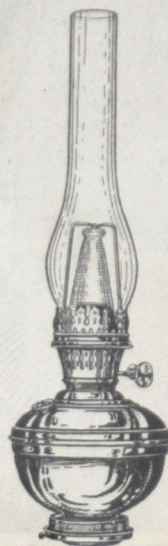
KEROSENE (Coal Oil) MANTLE LAMP



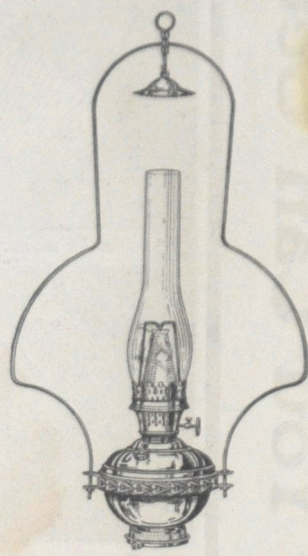
No. 101.  
ALADDIN TABLE LAMP  
Complete with Tripod  
Polished Brass or Nickel  
PRICE \$4.50



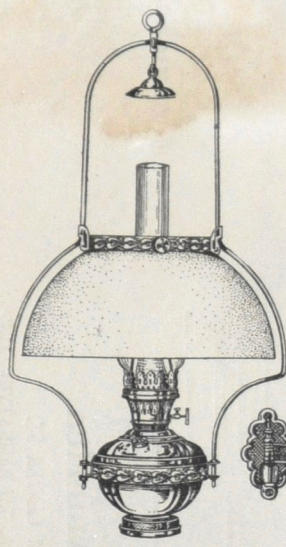
No. 101.  
TABLE LAMP. Complete with Tripod  
and No. 201 Fancy Opal Shade.  
Polished Brass or Nickel.  
PRICE \$5.00



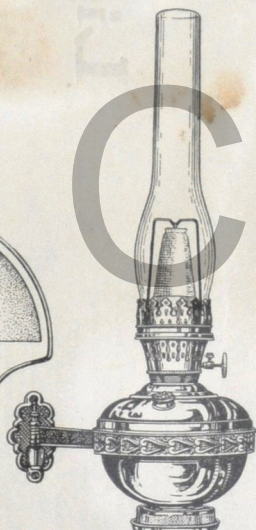
No. 102.  
STORE LAMP. (6 INCH)  
Complete as above.  
Polished Brass or Nickel.  
PRICE \$4.00



No. 103.  
HANGING LAMP. Complete with Harp and  
Bell. Polished Brass or Nickel.  
PRICE \$4.50



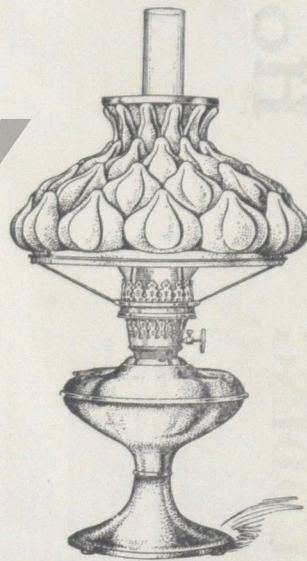
No. 104.  
HANGING LAMP. Complete with Harp and  
Bell, Harp Crown and 14-inch Opal Dome  
Shade. Polished Brass or Nickel  
PRICE \$5.50



No. 105.  
BRACKET LAMP. Complet  
as above.  
Polished Brass or Nickel.  
PRICE \$4.50



No. 106.  
OIL POT. (5-IN.) Complete  
as above. Fits Fancy Vase  
or Hanging Fixture.  
Polished Brass Only.  
PRICE \$4.00



No. 108.  
ALADDIN PARLOR LAMP. Complete  
with 10-inch Shade Ring and Special Designed  
Fancy Green Cased Shade.  
Polished Brass, Old English or Jap Bronze.  
PRICE \$7.00

Brightens the Home  
Makes Evening Reading and  
Sewing a Pleasure  
Saves the Eyes  
Eases up on the Pocket Book

It has so many good points  
found in no other lamp of any  
kind and its users are so enthus-  
iastic, that the ALADDIN Lamp  
is creating a stir among those who  
believe in home comforts and  
household economies.

The ALADDIN Lamp not only  
burns the kerosene oil used in any  
common, every-day oil lamp but  
it gives a whiter, purer and  
more brilliant light than any  
kerosene lamp manufactured;  
brighter and more delightful even  
than city gas or electricity. As  
a proof of this statement, we can  
offer you the testimony of hun-  
dreds of satisfied customers who  
have tried both and use the  
ALADDIN in preference to any  
other method of illumination.

The ALADDIN is something  
more than a beautiful lamp; it's a  
convenient, portable lamp requir-  
ing little care—burns without  
noise or odor—can't explode—  
pays little attention to sudden  
draughts and open doors. It  
burns a mantle of special dura-  
bility, has a round, seamless wick,  
smooth and specially woven to  
promote easy adjustment. Has a  
tough, leaded chimney—has less  
parts—is more perfect in design,  
construction, workmanship and  
operation than any other kerosene  
mantle burner or lamp in  
existence.

The real beauty of the  
ALADDIN Lamp lies in the fact  
that it is a portable lamp, giving  
a high grade, steady, white light  
burning any grade of coal oil  
(kerosene). It has a wick and  
lights and extinguishes just like  
the ordinary lamp—is simple,  
clean and absolutely safe. Its  
economical features makes it suit-  
able for the poor man's home as  
it only

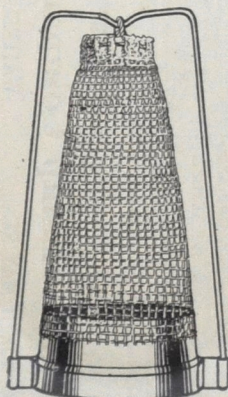
Costs One Cent FOR 6 CONTINUOUS  
HOURS BURNING

(Based on retail price of Oil in Chicago)

Think of it! In addition to the brightest, purest and safest light that human brain has ever devised, the ALADDIN Lamp has a feature of still more vital importance. It saves oil. In spite of the fact that it gives a better light, it burns only one-third as much oil as any oil lamp manufactured of similar size.

That means that the ALADDIN really costs you nothing for in a short time you have saved its cost—then goes on saving money in oil as long as you burn it and with ordinary care it lasts a life time.

A lamp is a real necessity. You must have light to work by—light to play by. Don't you owe it to yourself to have the best and brightest light when it offers you the means of saving?



ALADDIN MANTLE.  
Mounted as above.  
PRICE 25c

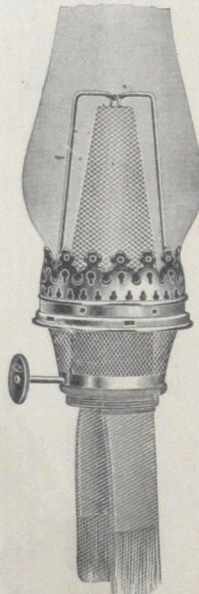
ALADDIN CHIMNEYS.  
Best Leaded Glass.  
PRICE 25c

GUARANTEE.

We guarantee that our ALADDIN Lamps and SUNBEAM Burners are constructed throughout of brass. Will not rust or corrode like tin or iron lamps which are cheaply nickel, brass, or oxidized plated.

SUNBEAM BURNER.

To supply the demand for burners adjustable to other lamps, we have the "SUNBEAM BURNER" It uses the same mantle and chimney as the ALADDIN Lamp and is adjustable to any No. 3 or D, or No. 2 or B collar lamp not center draught; burns with all the brilliancy and oil saving of the ALADDIN.

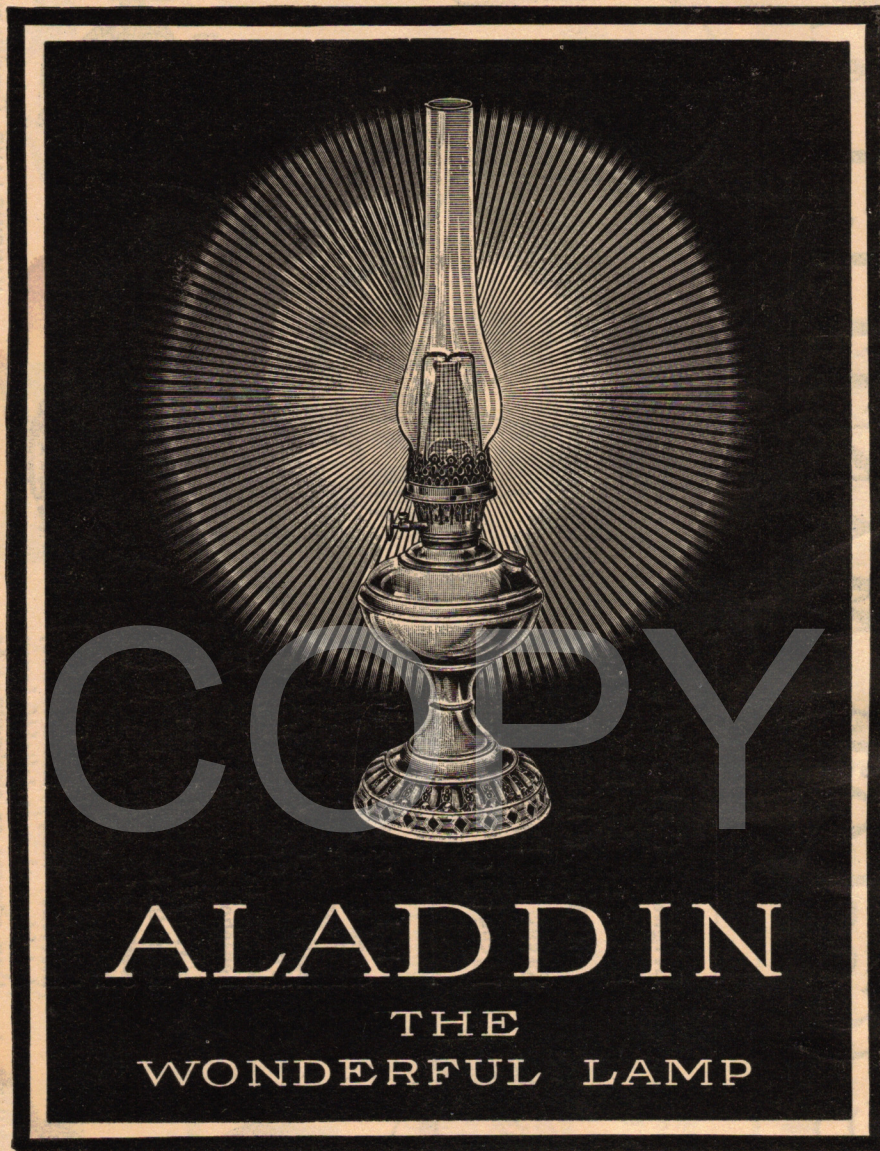


No. 150.  
SUNBEAM BURNER, complete  
with Mantle and Chimney. (Polished  
Brass or Nickel.) Adjustable to any  
No. 3 or D or No. 2 or B collar lamp  
not center draught.  
PRICE \$2.75

THE MANTLE LAMP COMPANY OF AMERICA

CHICAGO, ILL. PORTLAND, ORE. WATERBURY, CONN. WINNIPEG, CAN.

# How You Can Get More



## Light at a Lighter Expense

**THE MANTLE LAMP COMPANY  
OF AMERICA**

CHICAGO, ILL.    PORTLAND, ORE.    WATERBURY, CONN.    WINNIPEG, CAN.

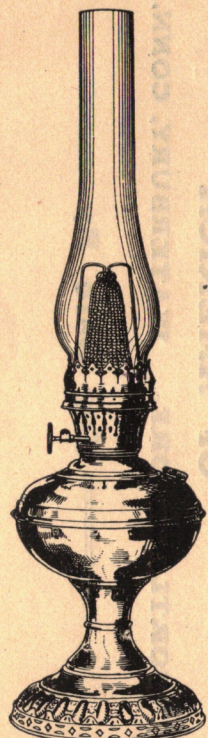
==== For Sale By ====



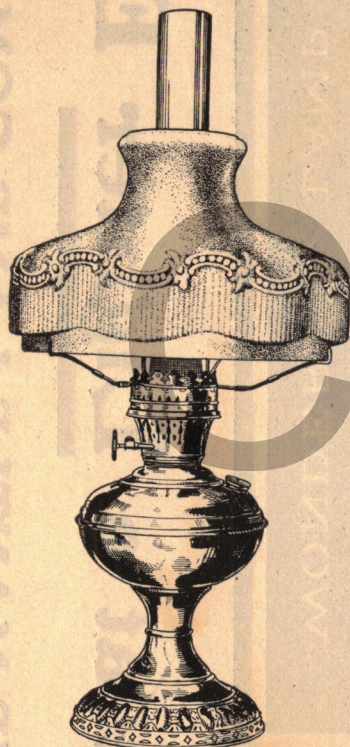
THE NEW  
IMPROVED **“ALADDIN”**  
INCANDESCENT



**KEROSENE (Coal Oil) MANTLE LAMP**



No. 101.  
**ALADDIN TABLE LAMP**  
Complete with Tripod  
Polished Brass or Nickel  
**PRICE \$4.50**



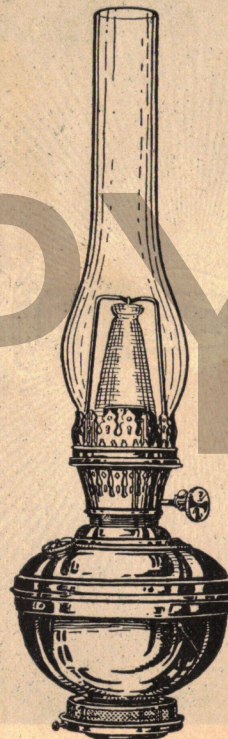
No. 101.  
**TABLE LAMP.** Complete with Tripod  
and No. 201 Fancy Opal Shade.  
Polished Brass or Nickel.  
**PRICE \$5.00**

Brightens the Home  
Makes Evening Reading and  
Sewing a Pleasure  
Saves the Eyes  
Eases up on the Pocket Book

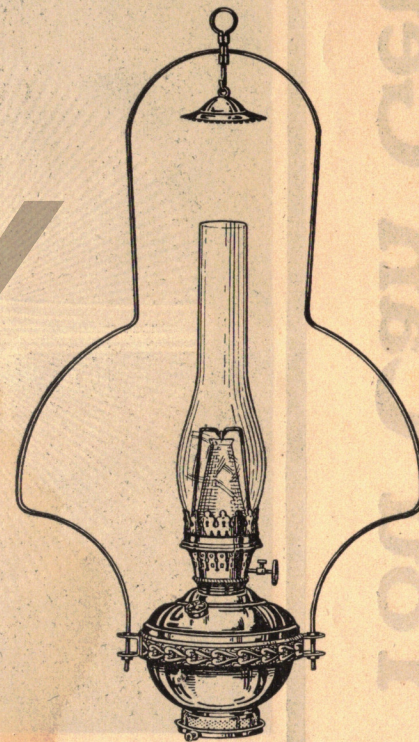
It has so many good points found in no other lamp of any kind and its users are so enthusiastic, that the ALADDIN Lamp is creating a stir among those who believe in home comforts and household economies.

The ALADDIN Lamp not only burns the kerosene oil used in any common, every-day oil lamp but it gives a *whiter, purer and more brilliant light* than any kerosene lamp manufactured; *brighter and more delightful even than city gas or electricity.* As a proof of this statement, we can offer you the testimony of hundreds of satisfied customers who have tried both and use the ALADDIN in preference to any other method of illumination.

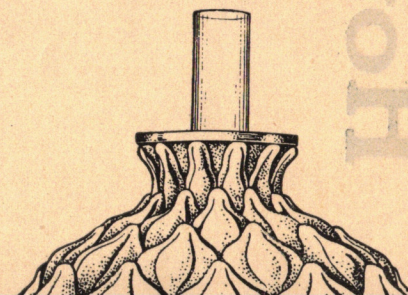
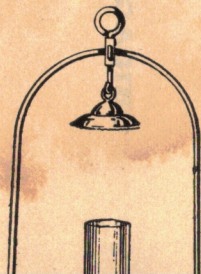
The ALADDIN is something more than a beautiful lamp; it's a convenient, portable lamp requiring little care—burns without noise or odor—can't explode—pays little attention to sudden



No. 102.  
**STORE LAMP. (6 INCH)**  
Complete as above.  
Polished Brass or Nickel.  
**PRICE \$4.00**



No. 103.  
**HANGING LAMP.** Complete with Harp and Bell. Polished Brass or Nickel.  
**PRICE \$4.50**





No. 101.  
**ALADDIN TABLE LAMP**  
Complete with Tripod  
Polished Brass or Nickel  
PRICE \$4.50



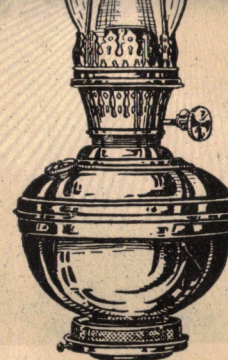
No. 101.  
**TABLE LAMP.** Complete with Tripod  
and No. 201 Fancy Opal Shade.  
Polished Brass or Nickel.  
PRICE \$5.00

It has so many good points found in no other lamp of any kind and its users are so enthusiastic, that the ALADDIN Lamp is creating a stir among those who believe in home comforts and household economies.

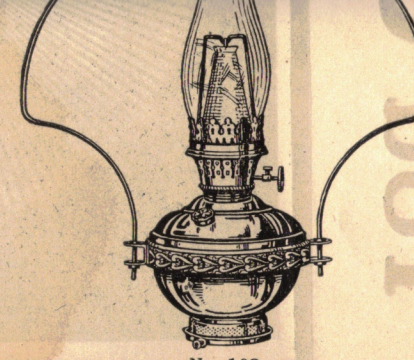
The ALADDIN Lamp not only burns the kerosene oil used in any common, every-day oil lamp but it gives a *whiter, purer* and *more brilliant light* than any kerosene lamp manufactured; *brighter and more delightful* even than city gas or electricity. As a proof of this statement, we can offer you the testimony of hundreds of satisfied customers who have tried both and use the ALADDIN in preference to any other method of illumination.

The ALADDIN is something more than a beautiful lamp; it's a convenient, portable lamp requiring little care—burns without noise or odor—can't explode—pays little attention to sudden draughts and open doors. It burns a mantle of special durability, has a round, seamless wick, smooth and specially woven to promote easy adjustment. Has a tough, leaded chimney—has less parts—is more perfect in design, construction, workmanship and operation than any other kerosene mantle burner or lamp in existence.

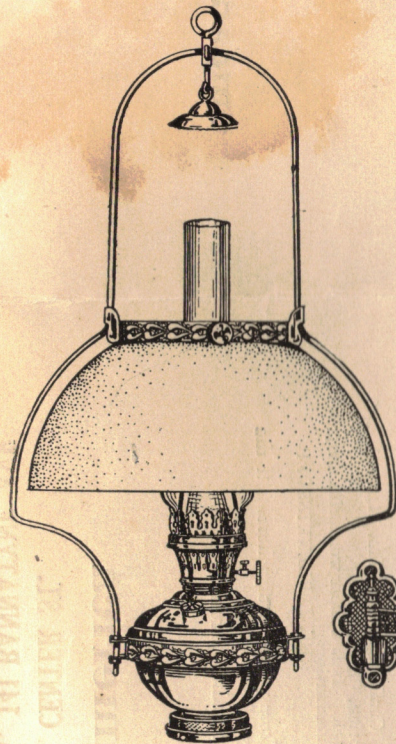
The real beauty of the ALADDIN Lamp lies in the fact that it is a portable lamp, giving a high grade, steady, white light burning any grade of coal oil (kerosene). It has a wick and lights and extinguishes just like the ordinary lamp—is *simple, clean and absolutely safe*. Its economical features makes it suitable for the poor man's home as it only



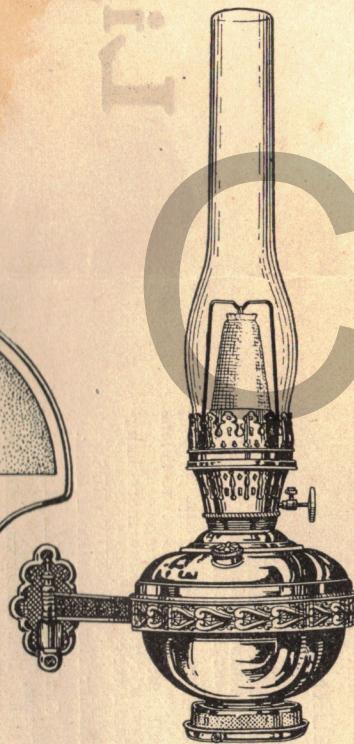
No. 102.  
**STORE LAMP. (6 INCH)**  
Complete as above.  
Polished Brass or Nickel.  
PRICE \$4.00



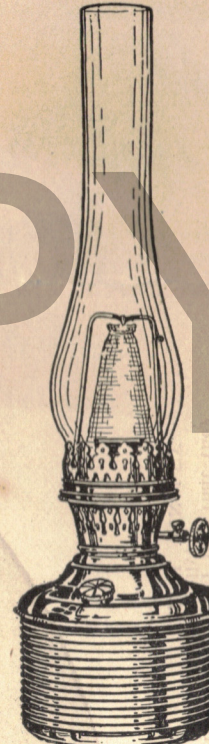
No. 103.  
**HANGING LAMP.** Complete with Harp and Bell. Polished Brass or Nickel.  
PRICE \$4.50



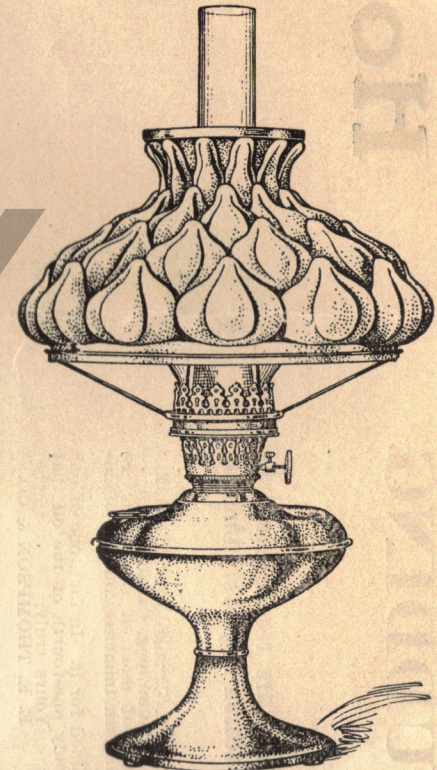
No. 104.  
**HANGING LAMP.** Complete with Harp and Bell, Harp Crown and 14-inch Opal Dome Shade. Polished Brass or Nickel  
PRICE \$5.50



No. 105.  
**BRACKET LAMP.** Complete as above.  
Polished Brass or Nickel.  
PRICE \$4.50



No. 106.  
**OIL POT. (5-IN.)** Complete as above. Fits Fancy Vase or Hanging Fixture.  
Polished Brass Only.  
PRICE \$4.00

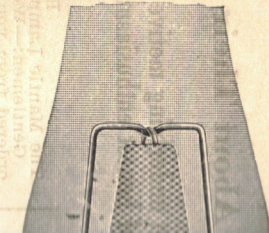


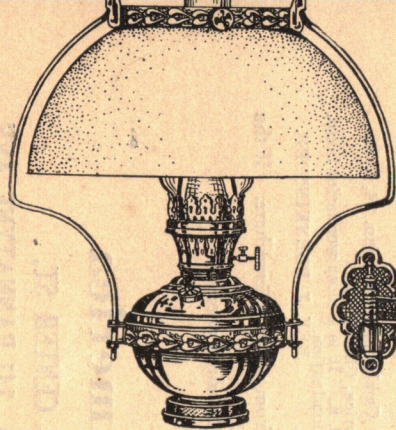
No. 108.  
**ALADDIN PARLOR LAMP.** Complete with 10-inch Shade Ring and Special Designed Fancy Green Cased Shade.  
Polished Brass, Old English or Jap Bronze.  
PRICE \$7.00

# Costs One Cent FOR 6 CONTINUOUS HOURS BURNING

(Based on retail price of Oil in Chicago)

Think of it! In addition to the brightest, purest and safest light that human brain

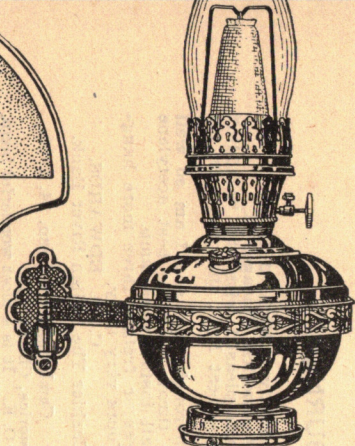




No. 104.

**HANGING LAMP.** Complete with Harp and Bell, Harp Crown and 14-inch Opal Dome Shade. Polished Brass or Nickel

PRICE \$5.50



No. 105.

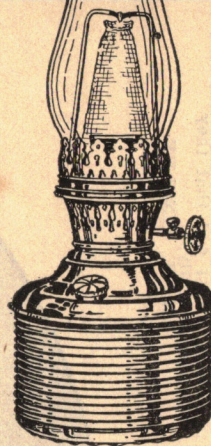
**BRACKET LAMP.** Complete as above.

Polished Brass or Nickel.

PRICE \$4.50

bility, has a round, seamless wick, smooth and specially woven to promote easy adjustment. Has a tough, leaded chimney—has less parts—is more perfect in design, construction, workmanship and operation than any other kerosene mantle burner or lamp in existence.

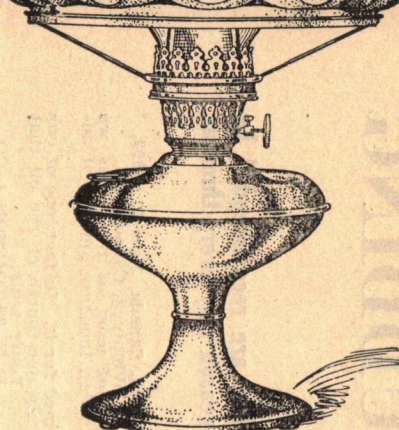
The real beauty of the ALADDIN Lamp lies in the fact that it is a portable lamp, giving a high grade, steady, white light burning any grade of coal oil (kerosene). It has a wick and lights and extinguishes just like the ordinary lamp—is *simple, clean and absolutely safe.* Its economical features makes it suitable for the poor man's home as it only



No. 106.

**OIL POT, (5-IN.)** Complete as above. Fits Fancy Vase or Hanging Fixture. Polished Brass Only.

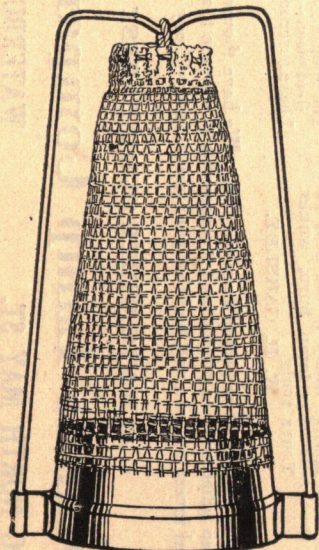
PRICE \$4.00



No. 108.

**ALADDIN PARLOR LAMP.** Complete with 10-inch Shade Ring and Special Designed Fancy Green Cased Shade. Polished Brass, Old English or Jap Bronze.

PRICE \$7.00



ALADDIN MANTLE.  
Mounted as above.

PRICE 25c

ALADDIN CHIMNEYS.  
Best Leaded Glass.

PRICE 25c

# Costs One Cent FOR 6 CONTINUOUS HOURS BURNING

(Based on retail price of Oil in Chicago)

Think of it! In addition to the brightest, purest and safest light that human brain has ever devised, the ALADDIN Lamp has a feature of still more vital importance. *It saves oil.* In spite of the fact that it gives a better light, it burns only one-third as much oil as any oil lamp manufactured of similar size.

That means that the ALADDIN really costs you nothing for in a short time you have *saved* its cost—then goes on saving money in oil as long as you burn it and with ordinary care it lasts a life time.

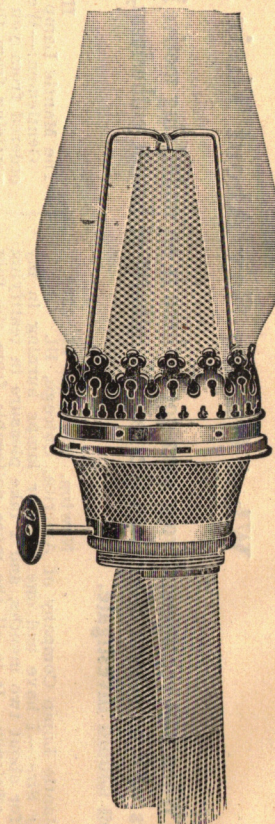
A lamp is a real necessity. You must have light to work by—light to play by. Don't you owe it to yourself to have the best and brightest light when it offers you the means of saving?

## GUARANTEE.

We guarantee that our ALADDIN Lamps and SUNBEAM Burners are constructed throughout of brass. Will not rust or corrode like tin or iron lamps which are cheaply nickel, brass, or oxidized plated.

## SUNBEAM BURNER.

To supply the demand for burners adjustable to other lamps, we have the "SUNBEAM BURNER" It uses the same mantle and chimney as the ALADDIN Lamp and is adjustable to any No. 3 or D, or No. 2 or B collar lamp not center draught; burns with all the brilliancy and oil saving of the ALADDIN.



No. 150.

**SUNBEAM BURNER,** complete with Mantle and Chimney. (Polished Brass or Nickel.) Adjustable to any No. 3 or D or No. 2 or B collar lamp not center draught.

PRICE \$2.75

# THE MANTLE LAMP COMPANY OF AMERICA

CHICAGO, ILL. PORTLAND, ORE. WATERBURY, CONN. WINNIPEG, CAN.

# THE PROOF OF THE PUDDING

## What Others Say About Their Lamps.

When you recommend your own goods there is an underlying motive! When they are recommended by others with no reason other than the natural outburst of honest enthusiasm, there is a reason why every thinking person should investigate.

Newton, Ill., Jan. 23, 1909.  
The Mantle Lamp Company of America, Chicago, Ill.  
Dear Sirs:—I have had one of your lamps burning in my store for about two months, and I take pleasure in testifying to its efficiency. It is all the more noticeable from the fact that I am burning twenty incandescent electric lights and the lamp makes them look like tallow candles.

Yours very truly,  
C. W. KISER.

De Witt, Ark., Sept. 20, 1909.  
The Mantle Lamp Company of America, Chicago, Ill.  
Dear Sirs.—I have been using four of your lamps since last December and have only broken two mantles and two chimneys. I discarded electric lights as I find your lights better and cheaper.

Yours truly,  
ED. BOWERS.

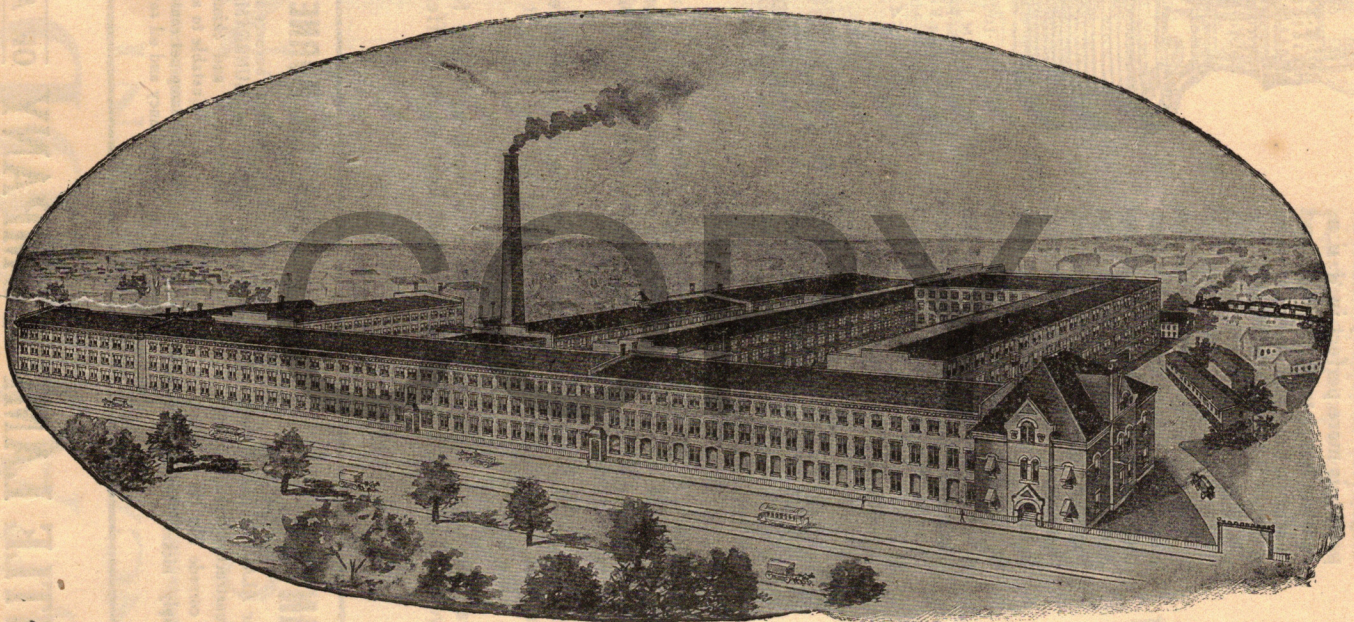
High River, Alberta, Canada, June 21, 1909.  
The Mantle Lamp Co. of America, Winnipeg, Canada.  
Gentlemen:—We have disposed of most of the lamps we ordered from you and are getting an immense amount of advertising from them.

The lamp does all that is claimed for it. In fact, one of our customers says that it burns only one-fourth of the oil that an ordinary house lamp uses.

Yours truly,  
E. E. THOMPSON & CO.

Unionville, Mo., Oct. 12, 1909.  
The Mantle Lamp Company of America, Chicago, Ill.  
Gentlemen:—I have been going over some of my territory during the past week to see how those who have been using the "Aladdin" since last fall like them, and I find that they are all perfectly satisfied.

Respectfully,  
H. H. TINSLEY.



THE HOME OF THE ALADDIN LAMP AND SUNBEAM BURNER.

Buenos Aires, Argentine Republic, Sept. 13, 1909.  
The Mantle Lamp Company of America, Chicago, Ill.  
Gentlemen:—As we anticipated in our last letter, your "Aladdin" is an excellent affair. We are very willing to undertake the introduction of your lamps which will have a very extensive sale. Gas and electricity are much dearer here than in the States, consequently, the use of lamps is more general and, moreover, your light is far superior to gas or electricity.

Yours truly,  
MASSALIN & CELASCO.

Carlton, Wash., Sept. 27, 1909.  
The Mantle Lamp Company of America, Portland, Ore.  
Gentlemen:—Your "ALADDIN" Mantle Lamp is the best in the world. Every family that sees this lamp burn, wants one of them.

Yours truly,  
W. H. CARSLEY.

Indian River, Mich., July 28, 1909.  
The Mantle Lamp Company of America, Chicago, Ill.  
Gentlemen:—I am very much pleased with the "Aladdin" and consider it by all odds the best light that there is; all things considered.

I have given the lamp a thorough trial and I am so well satisfied that I am going to throw over the best acetylene plant that I know of and shall install your lamp.

You may ship me by express or freight three more hanging lamps.

Yours very truly,  
C. H. EDWARDS,  
Cashier The Indian River Bank.

Cambridge, Wis., Jan. 14, 1909.  
The Mantle Lamp Company of America, Chicago, Ill.  
Gentlemen:—I received the lamp O. K. It is a most wonderful lamp. I have never seen a lamp give such illumination.

REV. J. BLENKINSOPP.

These are but a mere handful of letters picked from our files. We have thousands of such letters from people everywhere. If the ALADDIN Lamp is proving so satisfactory to others, isn't it reasonable to suppose that it will also please you?  
Read the other side and invest and you will find that your investment will pay dividends of several hundred percent.

ALWAYS WRITE OUR NEAREST OFFICE

## The Mantle Lamp Company of America

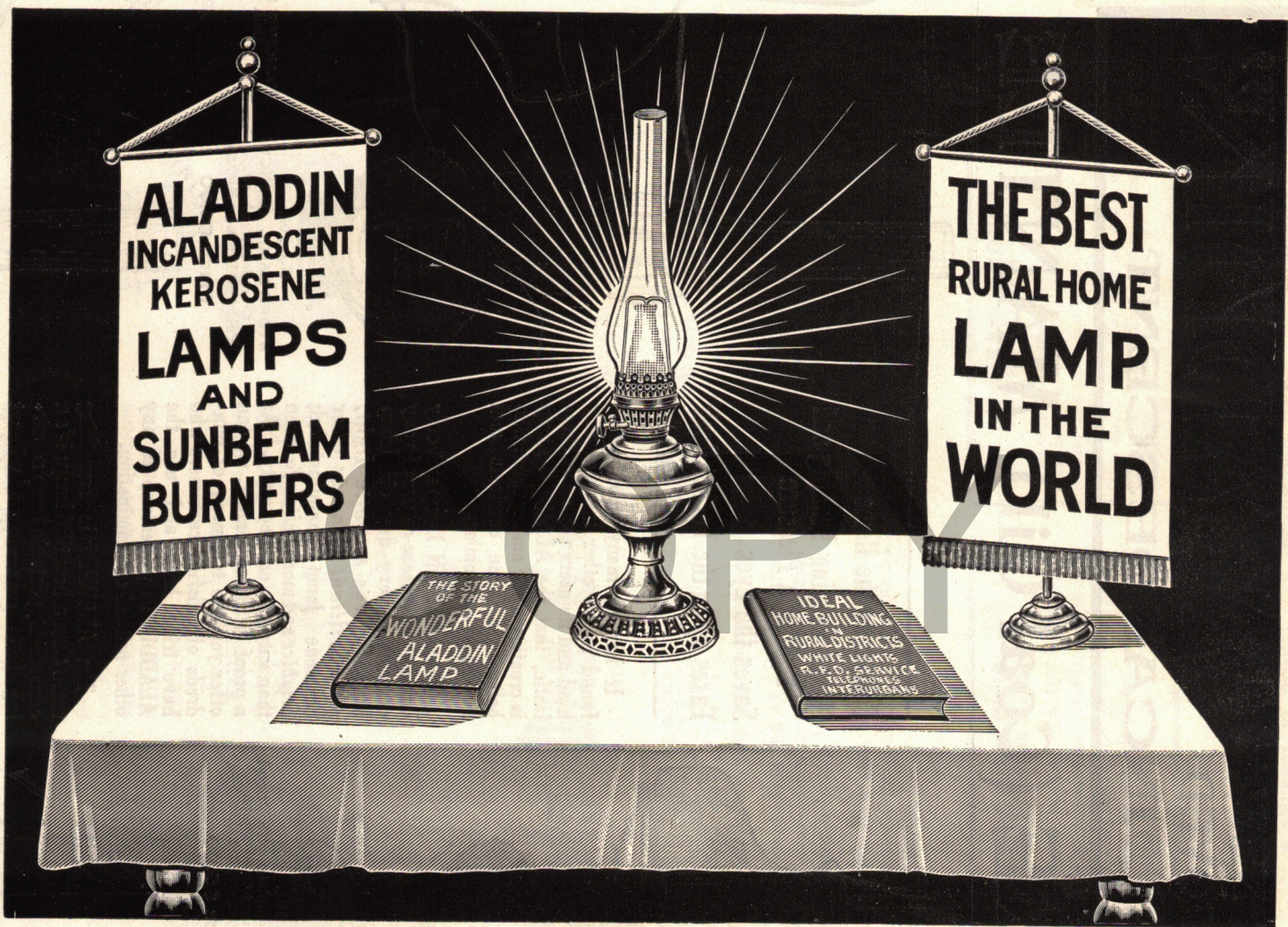
CHICAGO, ILL., 312-320 NORTH MAY ST.

PORTLAND, ORE., 545 FIRST ST.

WATERBURY, CONN., 63 CENTER ST.

WINNIPEG CANADA, 141 BANNATYNE AVE.

# "ALADDIN"



**THE MANTLE LAMP COMPANY OF AMERICA**

CHICAGO, U. S. A.

Branch Offices:

Waterbury, Conn.

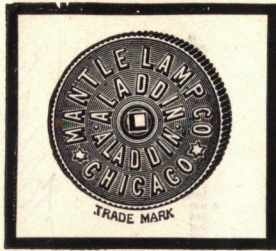
Portland, Ore.

Montreal, Can.

Winnipeg, Can.

FOR SALE BY

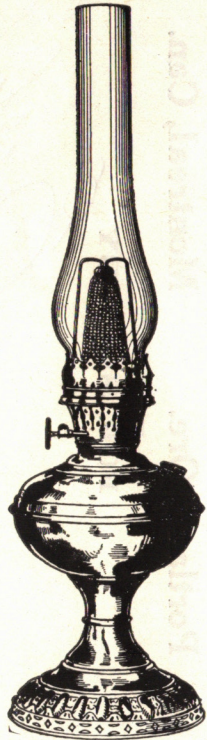
*Carl H. Fortney,  
Dillsburg,  
R.D. #2, Box 83, Pa.*



THE NEW IMPROVED **“ALADDIN”** INCANDESCENT



**KEROSENE (Coal Oil) MANTLE LAMP**



No. 101.  
**ALADDIN TABLE LAMP**  
Complete with Tripod  
Polished Brass or Nickel  
PRICE \$4.50



No. 101.  
**TABLE LAMP.** Complete with Tripod  
and No. 201 Fancy Opal Shade.  
Polished Brass or Nickel.  
PRICE \$5.00

Brightens the Home  
Makes Evening Reading and  
Sewing a Pleasure  
Saves the Eyes  
Eases up on the Pocket Book

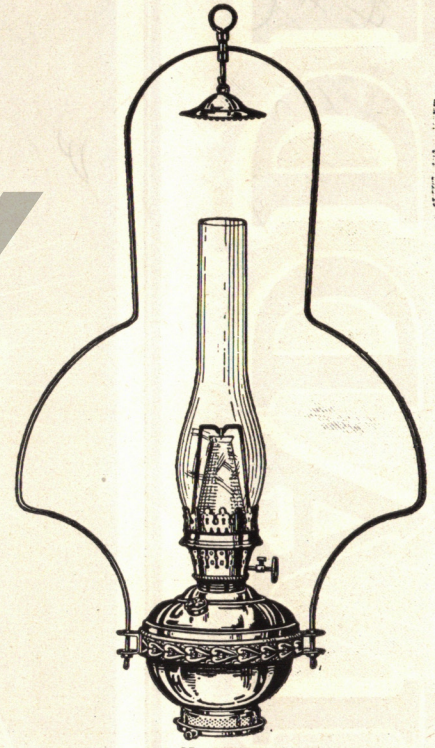
It has so many good points found in no other lamp of any kind and its users are so enthusiastic, that the ALADDIN Lamp is creating a stir among those who believe in home comforts and household economies.

The ALADDIN Lamp not only burns the kerosene oil used in any common, every-day oil lamp but it gives a *white light, more brilliant than any other kerosene lamp manufactured; brighter and more delightful even than city gas or electricity.* As a proof of this statement, we can offer you the testimony of hundreds of satisfied customers who have tried both and use the ALADDIN in preference to any other method of illumination.

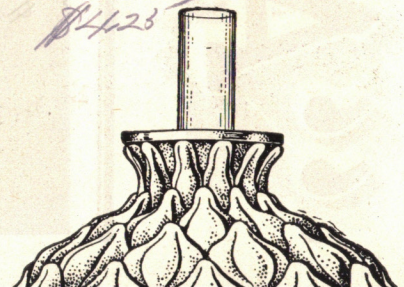
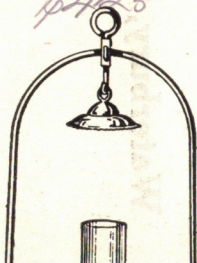
The ALADDIN is something more than a beautiful lamp; it's a convenient, portable lamp requiring little care—burns without noise or odor—can't explode—pays little attention to sudden



No. 102.  
**STORE LAMP. (6 INCH)**  
Complete as above.  
Polished Brass or Nickel.  
PRICE \$4.00

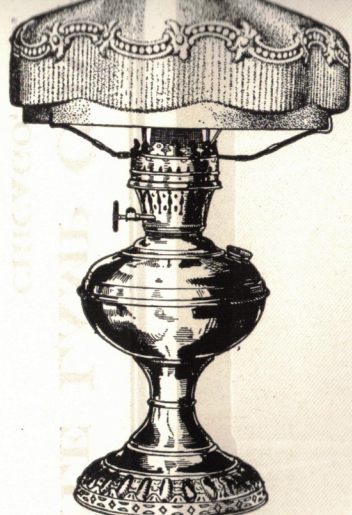


No. 103.  
**HANGING LAMP.** Complete with Harp and Bell.  
Polished Brass or Nickel.  
PRICE \$4.50





No. 101.  
**ALADDIN TABLE LAMP**  
Complete with Tripod  
Polished Brass or Nickel  
PRICE \$4.50



No. 101.  
**TABLE LAMP.** Complete with Tripod  
and No. 201 Fancy Opal Shade.  
Polished Brass or Nickel.  
PRICE \$5.00

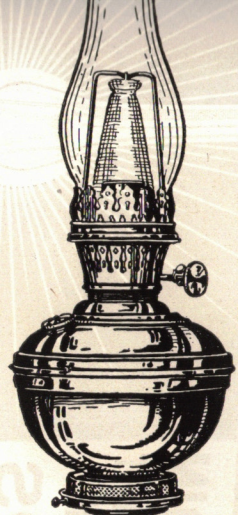
### Saves the Eyes Eases up on the Pocket Book

It has so many good points found in no other lamp of any kind and its users are so enthusiastic, that the ALADDIN Lamp is creating a stir among those who believe in home comforts and household economies.

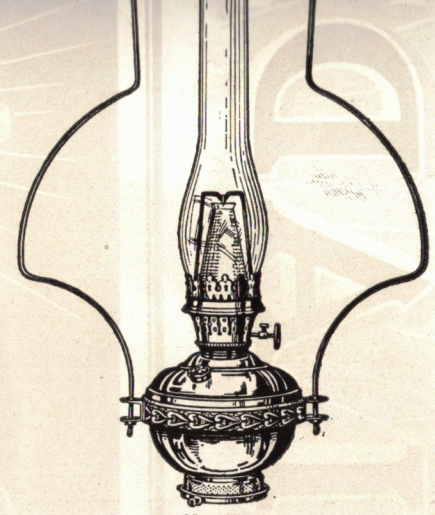
The ALADDIN Lamp not only burns the kerosene oil used in any common, every-day oil lamp but it gives a *white light, more brilliant* than any other kerosene lamp manufactured; *brighter and more delightful* even than city gas or electricity. As a proof of this statement, we can offer you the testimony of hundreds of satisfied customers who have tried both and use the ALADDIN in preference to any other method of illumination.

The ALADDIN is something more than a beautiful lamp; it's a convenient, portable lamp requiring little care—burns without *noise or odor—can't explode*—pays little attention to sudden draughts and open doors. It burns a mantle of special durability, has a round, seamless wick, smooth and specially woven to promote easy adjustment. Has a tough, leaded chimney—has less parts—is more perfect in design, construction, workmanship and operation than any other kerosene mantle burner or lamp in existence.

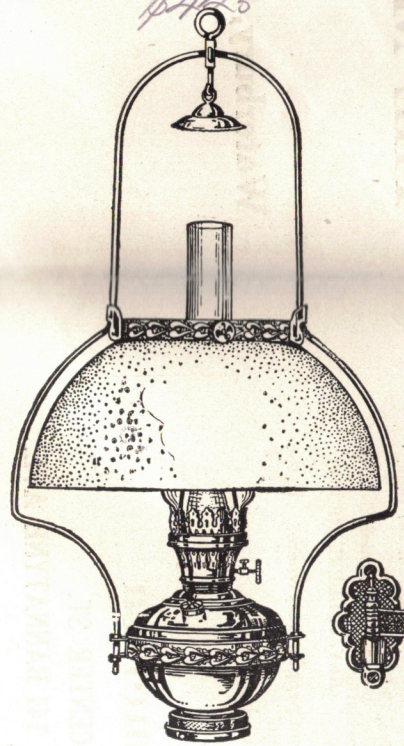
The real beauty of the ALADDIN Lamp lies in the fact that it is a portable lamp, giving a high grade, steady, white light burning any grade of coal oil (kerosene). It has a wick and lights and extinguishes just like the ordinary lamp—is *simple, clean and absolutely safe*. Its economical features makes it suitable for the poor man's home as it only



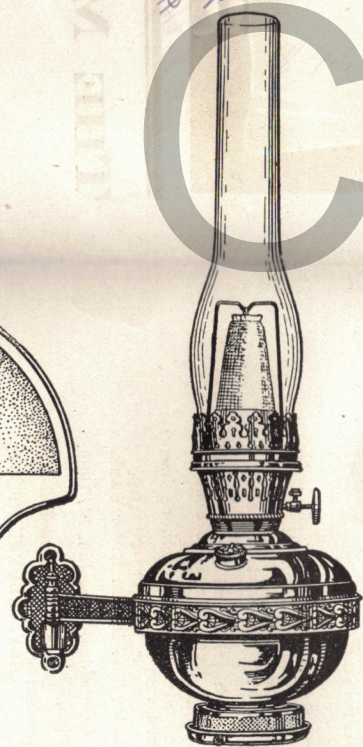
No. 102.  
**STORE LAMP. (6 INCH)**  
Complete as above.  
Polished Brass or Nickel.  
PRICE \$4.00



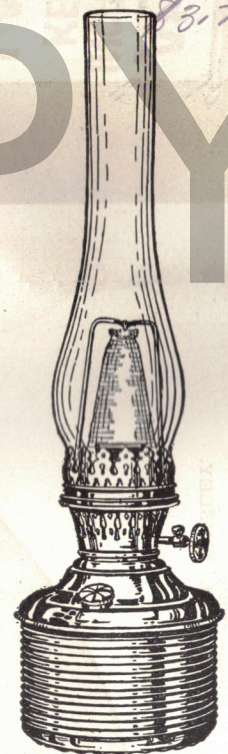
No. 103.  
**HANGING LAMP.** Complete with Harp and Bell. Polished Brass or Nickel.  
PRICE \$4.50



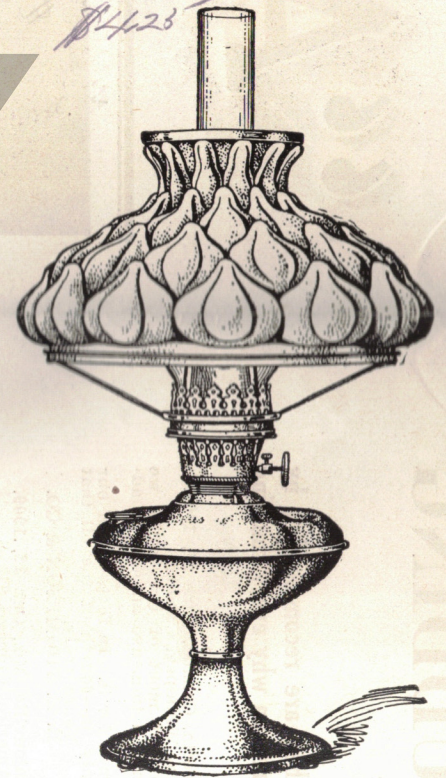
No. 104.  
**HANGING LAMP.** Complete with Harp and Bell, Harp Crown and 14-inch Opal Dome Shade. Polished Brass or Nickel.  
PRICE \$5.50



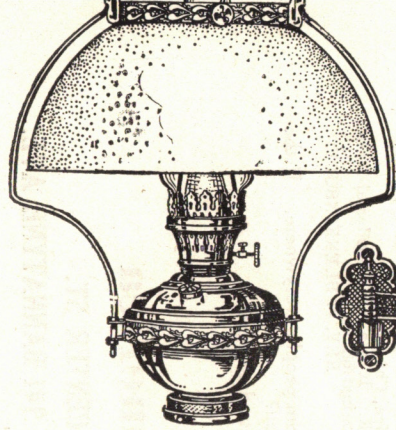
No. 105.  
**BRACKET LAMP.** Complete as above.  
Polished Brass or Nickel.  
PRICE \$4.50



No. 106.  
**OIL POT. (5-IN.)** Complete as above. Fits Fancy Vase or Hanging Fixture.  
Polished Brass Only.  
PRICE \$4.00



No. 108.  
**ALADDIN PARLOR LAMP.** Complete with 10-inch Shade Ring and Special Designed Fancy Green Cased Shade.  
Polished Brass. Old English or Jap Bronze.  
PRICE \$7.00

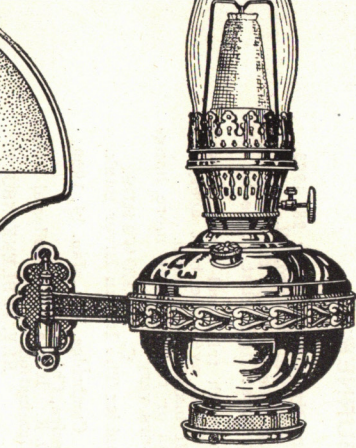


No. 104.

**HANGING LAMP.** Complete with Harp and Bell, Harp Crown and 14-inch Opal Dome Shade. Polished Brass or Nickel.

PRICE \$5.50

*\$5.00*



No. 105.

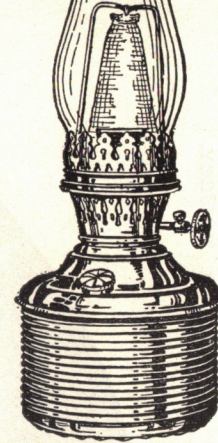
**BRACKET LAMP.** Complete as above. Polished Brass or Nickel.

PRICE \$4.50

*\$4.25*

bility, has a round, seamless wick, smooth and specially woven to promote easy adjustment. Has a tough, leaded chimney—has less parts—is more perfect in design, construction, workmanship and operation than any other kerosene mantle burner or lamp in existence.

The real beauty of the ALADDIN Lamp lies in the fact that it is a portable lamp, giving a high grade, steady, white light burning any grade of coal oil (kerosene). It has a wick and lights and extinguishes just like the ordinary lamp—is *simple, clean and absolutely safe.* Its economical features makes it suitable for the poor man's home as it only

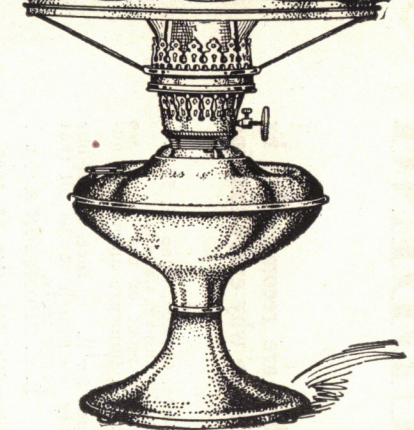


No. 106.

**OIL POT. (5-IN.)** Complete as above. Fits Fancy Vase or Hanging Fixture. Polished Brass Only.

PRICE \$4.00

*\$3.75*



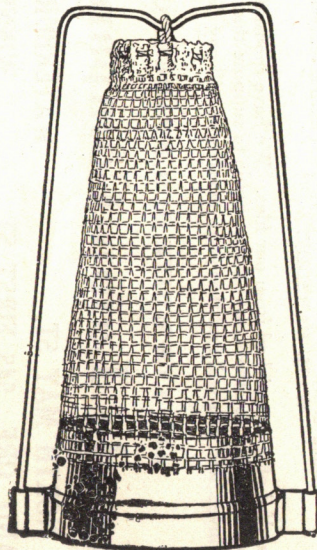
No. 108.

**ALADDIN PARLOR LAMP.** Complete with 10-inch Shade Ring and Special Designed Fancy Green Cased Shade.

Polished Brass. Old English or Jap Bronze.

PRICE \$7.00

*\$6.75*



**ALADDIN MANTLE.**

Mounted as above.

PRICE 25c

Mantles will be sent direct from any of our offices at the above price, postage prepaid, in packages of 4, 6, or 12. Remit in stamps, or P. O., or Express Money Order.

**ALADDIN CHIMNEYS.**

Best Leaded Glass.

PRICE 25c

# Costs One Cent FOR 6 CONTINUOUS HOURS BURNING

(Based on retail price of Oil in Chicago)

Think of it! In addition to the brightest, purest and safest light that human brain has ever devised, the ALADDIN Lamp has a feature of still more vital importance. *It saves oil.* In spite of the fact that it gives a better light, it burns only one-third as much oil as any oil lamp manufactured of similar size.

That means that the ALADDIN really costs you nothing for in a short time you have *saved* its cost—then goes on saving money in oil as long as you burn it and with ordinary care it lasts a life time.

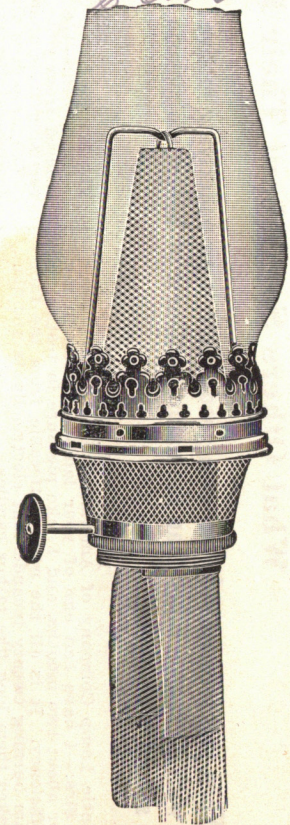
A lamp is a real necessity. You must have light to work by—light to play by. Don't you owe it to yourself to have the best and brightest light when it offers you the means of saving?

## GUARANTEE.

We guarantee that our ALADDIN Lamps and SUNBEAM Burners are constructed throughout of brass. Will not rust or corrode like tin or iron lamps which are cheaply nickel, brass, or oxidized plated.

## SUNBEAM BURNER.

To supply the demand for burners adjustable to other lamps, we have the "SUNBEAM BURNER" It uses the same mantle and chimney as the ALADDIN Lamp and is adjustable to any No. 3 or D, or No. 2 or B collar lamp not center draught; burns with all the brilliancy and oil saving of the ALADDIN.



No. 150.

**SUNBEAM BURNER,** complete with Mantle and Chimney. (Polished Brass or Nickel.) Adjustable to any No. 3 or D or No. 2 or B collar lamp not center draught.

PRICE \$2.75

# THE MANTLE LAMP COMPANY OF AMERICA

CHICAGO, ILL.

PORTLAND, ORE.

WATERBURY, CONN.

WINNIPEG, CAN.

MONTREAL, CAN.

# THE PROOF OF THE PUDDING

## What Others Say About Their Lamps.

When you recommend your own goods there is an underlying motive! When they are recommended by others with no reason other than the natural outburst of honest enthusiasm, there is a reason why every thinking person should investigate.

Newton, Ill., Jan. 23, 1909.  
The Mantle Lamp Company of America, Chicago, Ill.  
Dear Sirs:—I have had one of your lamps burning in my store for about two months, and I take pleasure in testifying to its efficiency. It is all the more noticeable from the fact that I am burning twenty incandescent electric lights and the lamp makes them look like tallow candles.

Yours very truly,  
C. W. KISER.

De Witt, Ark., Sept. 20, 1909.  
The Mantle Lamp Company of America, Chicago, Ill.  
Dear Sirs:—I have been using four of your lamps since last December and have only broken two mantles and two chimneys. I discarded electric lights as I find your lights better and cheaper.

Yours truly,  
ED. BOWERS.

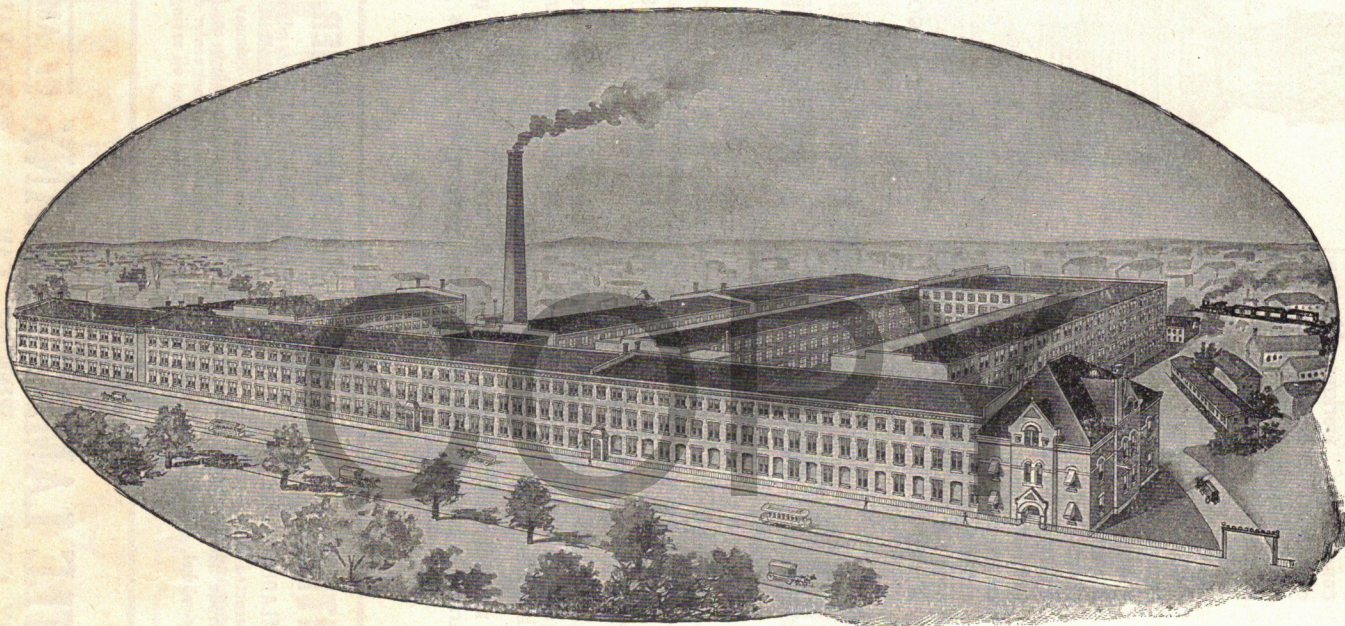
High River, Alberta, Canada, June 21, 1909.  
The Mantle Lamp Co. of America, Winnipeg, Canada.  
Gentlemen:—We have disposed of most of the lamps we ordered from you and are getting an immense amount of advertising from them.

The lamp does all that is claimed for it. In fact, one of our customers says that it burns only one-fourth of the oil that an ordinary house lamp uses.

Yours truly,  
E. E. THOMPSON & CO.

Unionville, Mo., Oct. 12, 1909.  
The Mantle Lamp Company of America, Chicago, Ill.  
Gentlemen:—I have been going over some of my territory during the past week to see how those who have been using the "Aladdin" since last fall like them, and I find that they are all perfectly satisfied.

Respectfully,  
H. H. TINSLEY.



THE HOME OF THE ALADDIN LAMP AND SUNBEAM BURNER.

Buenos Aires, Argentine Republic, Sept. 13, 1909.  
The Mantle Lamp Company of America, Chicago, Ill.  
Gentlemen:—As we anticipated in our last letter, your "Aladdin" is an excellent affair. We are very willing to undertake the introduction of your lamps which will have a very extensive sale. Gas and electricity are much dearer here than in the States, consequently, the use of lamps is more general and, moreover, your light is far superior to gas or electricity.

Yours truly,  
MASSALIN & CELASCO.

Carlton, Wash., Sept. 27, 1909.  
The Mantle Lamp Company of America, Portland, Ore.  
Gentlemen:—Your "ALADDIN" Mantle Lamp is the best in the world. Every family that sees this lamp burn, wants one of them.

Yours truly,  
W. H. CARSLEY.

Indian River, Mich., July 28, 1909.  
The Mantle Lamp Company of America, Chicago, Ill.  
Gentlemen:—I am very much pleased with the "Aladdin" and consider it by all odds the best light that there is; all things considered.

I have given the lamp a thorough trial and I am so well satisfied that I am going to throw over the best acetylene plant that I know of and shall install your lamp.

You may ship me by express or freight three more hanging lamps.

Yours very truly,  
C. H. EDWARDS,  
Cashier The Indian River Bank.

Cambridge, Wis., Jan. 14, 1909.  
The Mantle Lamp Company of America, Chicago, Ill.  
Gentlemen:—I received the lamp O. K. It is a most wonderful lamp. I have never seen a lamp give such illumination.

REV. J. BLENKINSOPP.

These are but a mere handful of letters picked from our files. We have thousands of such letters from people everywhere. If the ALADDIN Lamp is proving so satisfactory to others, isn't it reasonable to suppose that it will also please you?

Read the other side and invest and you will find that your investment will pay dividends of several hundred percent.

ALWAYS WRITE OUR NEAREST OFFICE

## The Mantle Lamp Company of America

CHICAGO, ILL., 312-320 NORTH MAY ST.

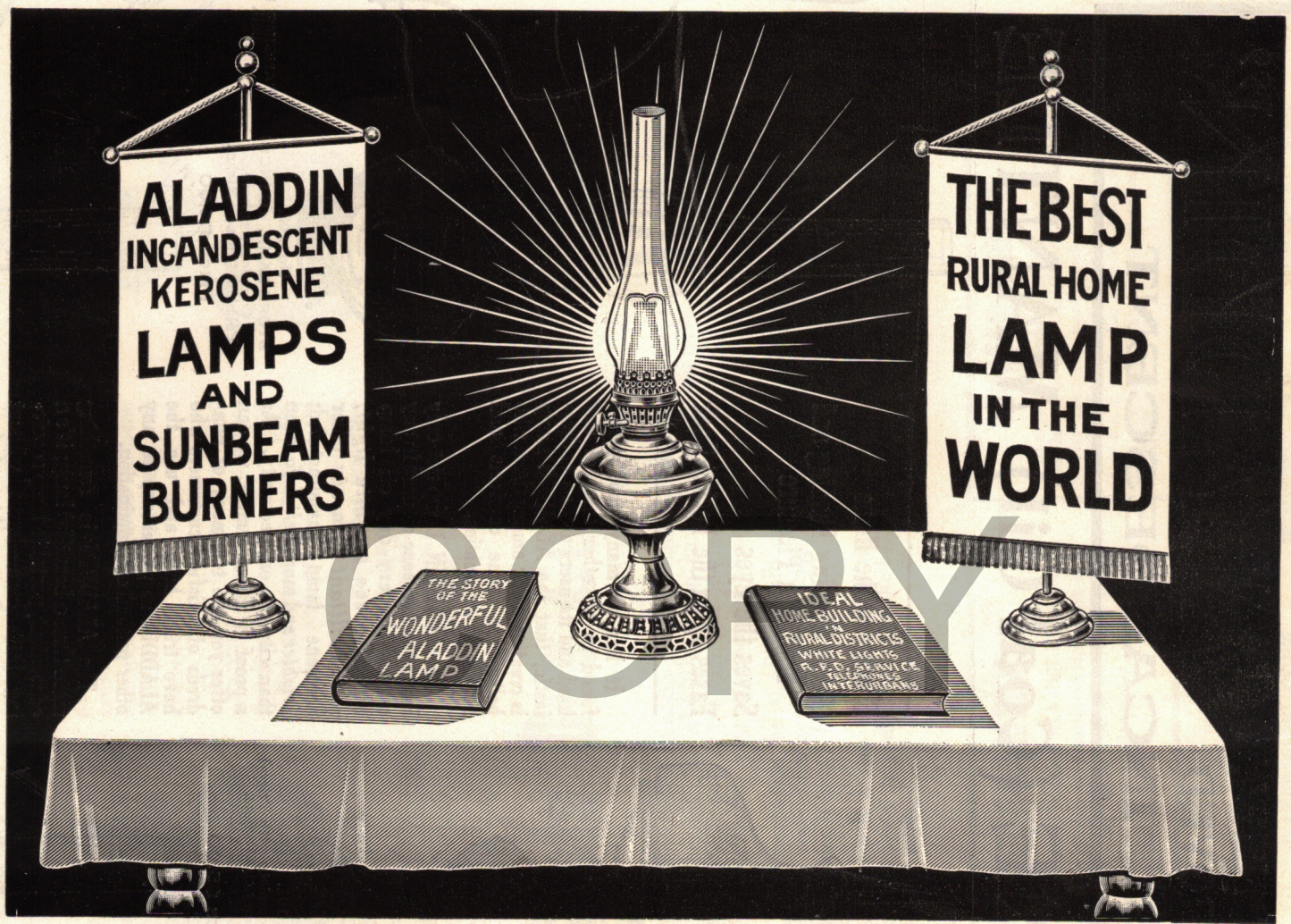
WATERBURY, CONN., 63 CENTER ST.

PORTLAND, ORE., 545 FIRST ST.

WINNIPEG CANADA, 141 BANNATYNE AVE.

MONTREAL, CANADA, 340 NOTRE DAME STREET WEST.

# "ALADDIN"



**THE MANTLE LAMP COMPANY OF AMERICA**  
CHICAGO, U. S. A.

Branch Offices:

Waterbury, Conn.

Portland, Ore.

Montreal, Can.

Winnipeg, Can.

FOR SALE BY

*Carl H. Fortney,*  
*Dillsburg,*  
*R.D. #2, Box 83, Pa.*

THE NEW 1909



# ALADDIN



## Incandescent Kerosene Mantle Lamp

(PATENTED)

PRODUCES A MOST UNIFORM AND PURE WHITE LIGHT, FROM THE  
CHEAPEST ILLUMINANT KNOWN---KEROSENE

# COSTS - 1 - CENT

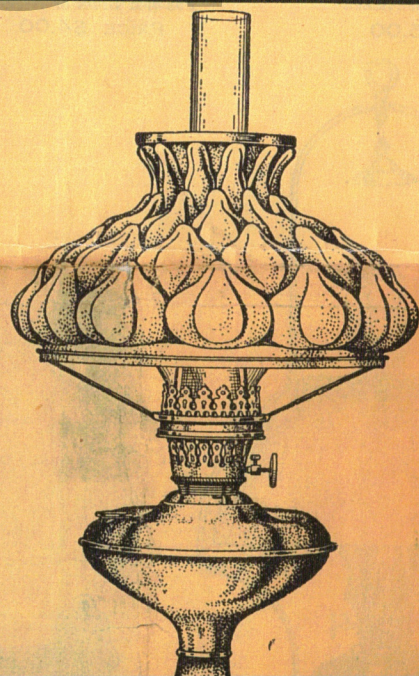
FOR

## 6 HOURS CONTINUOUS BURNING

**Brighter than Gas or  
Electricity, at a much  
smaller cost**

**BURNS LESS OIL**

than any other Kerosene Lamp,  
Candle-Power considered.  
Lamp will pay for itself in a very  
short time. Burns a Mantle of  
special durability, mounted on  
ring with double support, com-  
bining economy and convenience.  
Chimneys are specially durable,  
being made of the very best  
leaded glass. Wick is round and  
seamless, specially woven to  
produce the smoothest possible



## THE ALADDIN

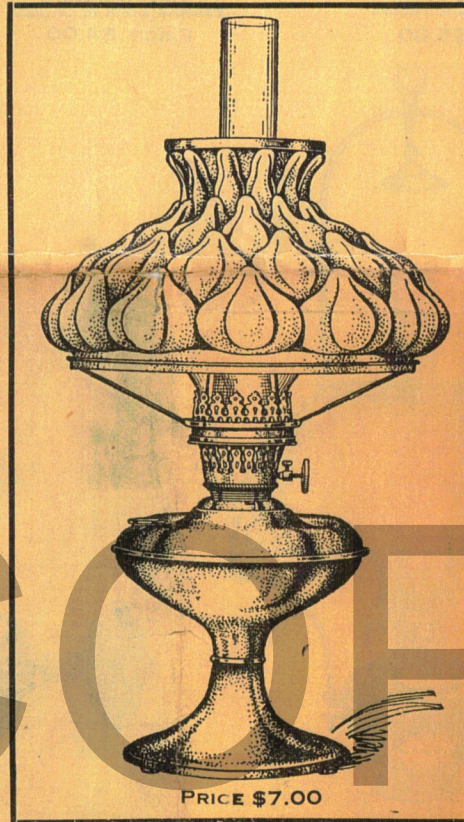
Is less affected by draughts, sub-  
ject to less wear, has less parts,  
causes less trouble and care,  
costs less to maintain, is more  
durable, more perfect in design,  
construction, workmanship and  
operation than any other Kero-  
sene Mantle Burner or Lamp in  
existence.

**WITHOUT RESERVE  
THE VERY BEST AND MOST  
ECONOMICAL ARTIFICIAL  
LIGHT PRODUCED.**

FOR  
**6 HOURS CONTINUOUS BURNING**

**Brighter than Gas or  
Electricity, at a much  
smaller cost**  
**BURNS LESS OIL**

than any other Kerosene Lamp,  
Candle-Power considered.  
Lamp will pay for itself in a very  
short time. Burns a Mantle of  
special durability, mounted on  
ring with double support, combin-  
ing economy and convenience.  
Chimneys are specially durable,  
being made of the very best  
leaded glass. Wick is round and  
seamless, specially woven to  
produce the smoothest possible  
surface. Burns less than in any  
other lamp. Re-wicking most  
simple, and not often required.



**THE ALADDIN**

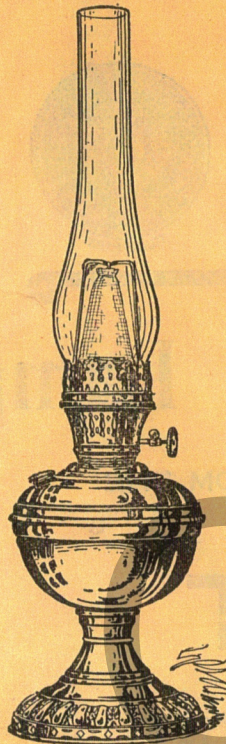
Is less affected by draughts, sub-  
ject to less wear, has less parts,  
causes less trouble and care,  
costs less to maintain, is more  
durable, more perfect in design,  
construction, workmanship and  
operation than any other Kero-  
sene Mantle Burner or Lamp in  
existence.

**WITHOUT RESERVE  
THE VERY BEST AND MOST  
ECONOMICAL ARTIFICIAL  
LIGHT PRODUCED.**

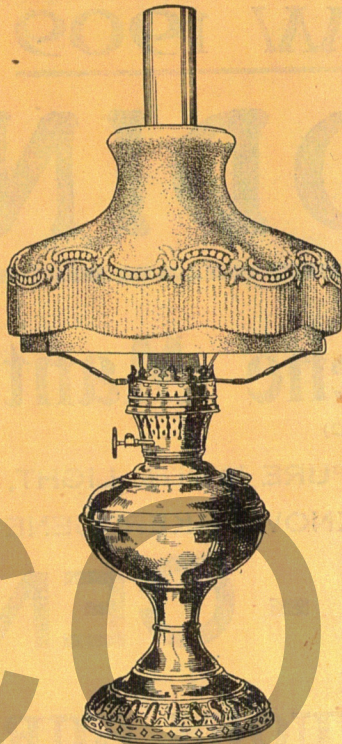
**AN IDEAL LIGHT FOR  
Store, Office or Home**

**THE MANTLE LAMP COMPANY,**  
OF AMERICA  
CHICAGO      PORTLAND      WINNIPEG  
**63 Center Street, WATERBURY, CONN.**  
FOR SALE BY

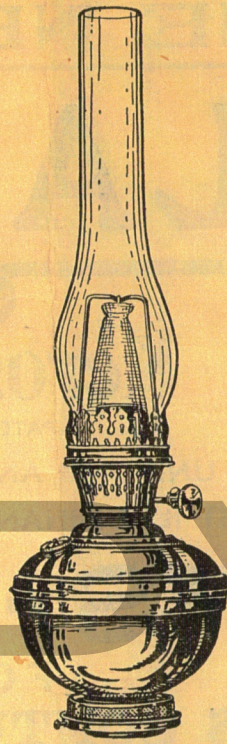
Figures above quoted based on retail price oil Chicago



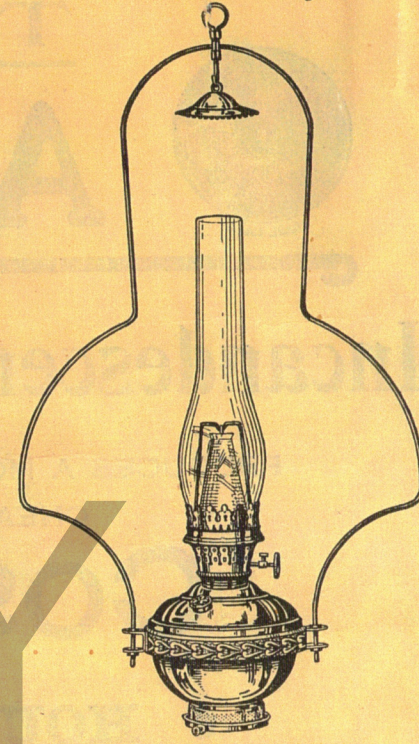
**ALADDIN TABLE LAMP**  
Complete with Tripod  
Polished Brass or Nickel  
PRICE \$4.50



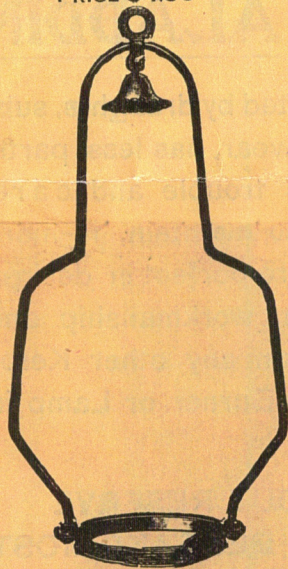
**TABLE LAMP.** Complete with  
Tripod and Fancy Opal Shade,  
Polished Brass or Nickel.  
PRICE \$5.00



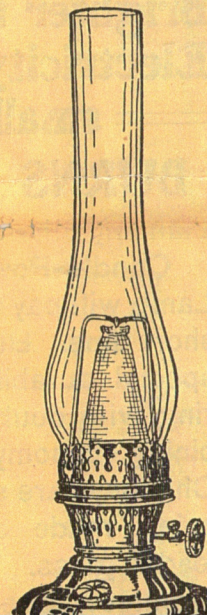
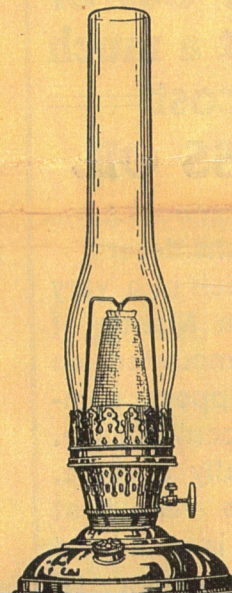
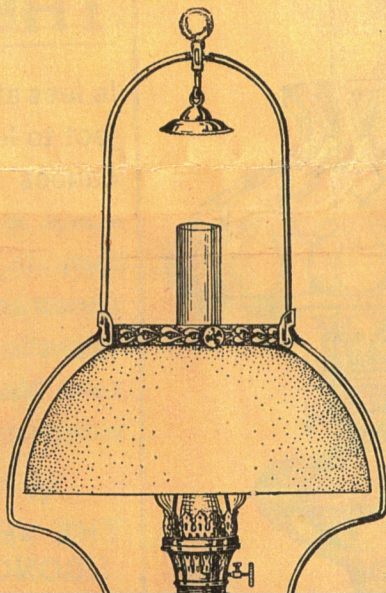
**STORE LAMP. (6 INCH)**  
Complete as above.  
Polished Brass or Nickel.  
PRICE \$4.00



**HANGING LAMP.** Complete with Harp and  
Bell. Polished Brass or Nickel.  
PRICE \$4.50



**HARP AND BELL for Store Lamp.**  
Brass or Nickel

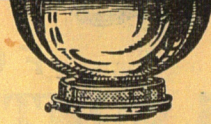




**ALADDIN TABLE LAMP**  
Complete with Tripod  
Polished Brass or Nickel  
PRICE \$4.50



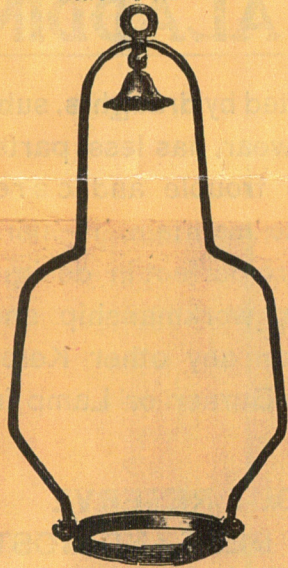
**TABLE LAMP.** Complete with  
Tripod and Fancy Opal Shade,  
Polished Brass/or Nickel.  
PRICE \$5.00



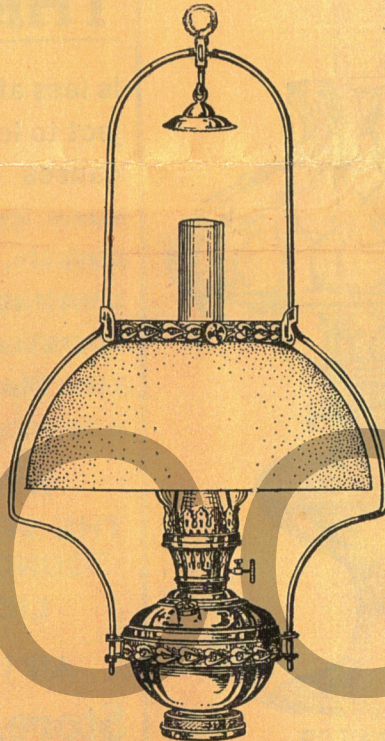
**STORE LAMP. (6 INCH)**  
Complete as above.  
Polished Brass or Nickel.  
PRICE \$4.00



**HANGING LAMP.** Complete with Harp and  
Bell. Polished Brass or Nickel.  
PRICE \$4.50



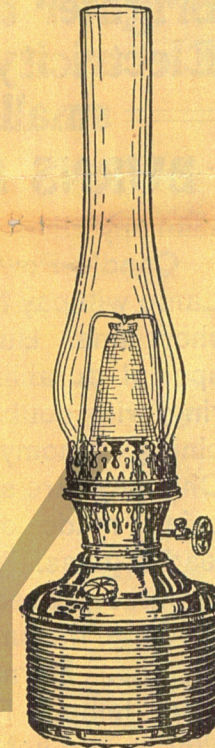
**HARP AND BELL for Store Lamp.**  
Brass or Nickel.  
PRICE - 40c



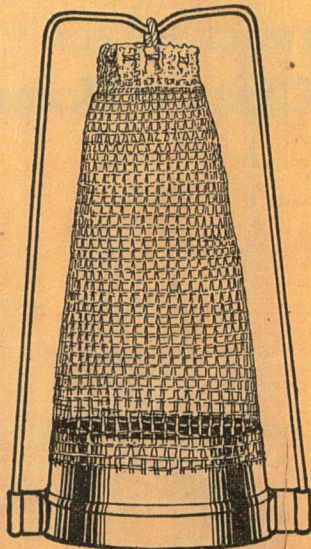
**HANGING LAMP.** Complete with Harp and  
Bell, Harp Crown and 14 inch Opal  
Dome Shade. Polished Brass  
or Nickel.  
PRICE \$5.50



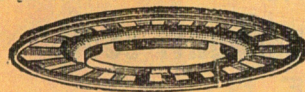
**BRACKET LAMP.** Complete as above.  
Polished Brass or Nickel.  
PRICE \$4.50



**OIL POT, (5 IN.)** Complete  
as above. Fits Fancy Vase  
or Hanging Fixture.  
Polished Brass Only.  
PRICE \$4.00

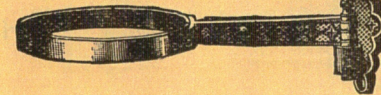


**MANTLE.** Mounted as above.  
PRICE 30c.

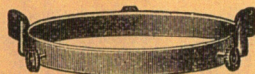


**4 INCH GLOBE HOLDER.** Brass or Nickel  
PRICE 20c EACH.

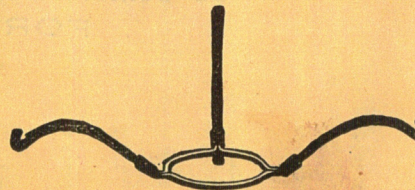
**ALADDIN CHIMNEYS.**  
Best Leaded Glass.  
PRICE 25c.



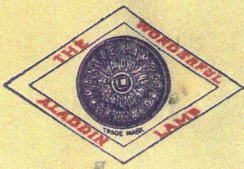
**BRACKET for Store  
Lamp.** Brass or  
Nickel.  
PRICE 40c



**HARP CROWN for 14-in. Dome Shade.**  
Brass or Nickel. PRICE 30c.



**TRIPOD for 10 inch Shades.** Brass or Nickel.  
PRICE 20c. EACH



CABLE ADDRESS  
"ALADDIN CHICAGO" A. B. C. CODE.  
WESTERN UNION-PRIVATE  
PHONES ALL MAIN 5368

# The Mantle Lamp Company

OF AMERICA

INCANDESCENT KEROSENE AND ALCOHOL

## Mantle Lamps and Burners

Office and Salesroom: 56 Fifth Avenue

CHICAGO, Mar. 13, 1909.

MAR 17 1909

Mr. J. A. Quisenberry,  
Danville, Ky.

Dear Sir:-

We are in receipt of your very kind favor of the 11th, and wish to say in reply that we have sold a good many thousand lamps in the state of Missouri and as we infer that you are like the man from Missouri and have to be shown, we shall be very glad to send you one of our Aladdin lamps on basis of proposition submitted and special offer circular herewith.

Should you wish to substitute the Parlor lamp which is the finest lamp we handle, same will cost you \$1.00 more.

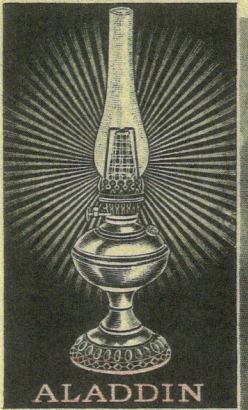
We shall be pleased to have your permission to make shipment on the basis of your proposition and we will give the matter our prompt and careful attention.

Yours very truly,

THE MANTLE LAMP COMPANY  
of America.

VJ-MT

P. S. We allow our agents a discount of 10% on all articles quoted on pages two and three of price list. In larger lots, a more liberal discount is allowed.



THE WONDERFUL LAMP

# The MANTLE LAMP COMPANY OF AMERICA. INCORPORATED

INCANDESCENT KEROSENE AND ALCOHOL

## MANTLE LAMPS AND BURNERS.



BRANCHES  
PORTLAND, OREGON.  
WINNIPEG, CANADA.  
WATERBURY, CONN.

312-314 N. MAY STREET.

Chicago, 10/14/09.

NOV 15 1909

Mr. J.A. Quisenberry,  
Danville,  
Ky.

Dear Sir:-

We herewith acknowledge receipt of your order for mantles, of which we shall endeavor to make shipment today and we trust this delay will cause you no serious inconvenience.

We are wondering if you could not now give us the name of some party in your vicinity who would make us a good agent. We herewith enclose a return envelope for reply and would appreciate hearing from you on the subject, for which we beg to thank you in advance.

Yours very truly,

THE MANTLE LAMP COMPANY  
of America.

LK-LB.

may be removed with a dull knife. Be sure and remove all little particles of carbon before lighting. Care should be used in cleaning wick, so as not to pull up any little threads.

The wick requires less attention than the wick in an open flame lamp, for the reason that it is not burned or charred after the blue flame is turned up into the mantle. The wick will, however, carbonize, more or less, after burning a few hours, according to the quality of oil used, and these little particles of carbon must be carefully wiped or brushed off before lighting again. If a tongue of yellow flame shoots up, it is evidence that a piece of carbon, or little thread, has been left in such position as to disturb the perfect mixing of air and gas.

#### TO EXTINGUISH LIGHT

Turn down wick and *carefully* blow out light, same as any oil lamp. (Wick cannot be thrown out of place by turning the button.)

#### RE-WICKING

Turn down wick as far as possible. Pull out brass wick holder. Insert new wick in holder so that it projects about one and three-fourths inches above top of holder. Insert wick and holder in burner, screw burner in lamp, which must not be filled with oil. Dip wick in oil, turning wick down until lower edge is even with inner wick tube; light and let burn until charred, when it should have smooth and uniform surface. If it does not, repeat operation. Fill lamp with oil, allowing wick to soak about thirty minutes before lighting.

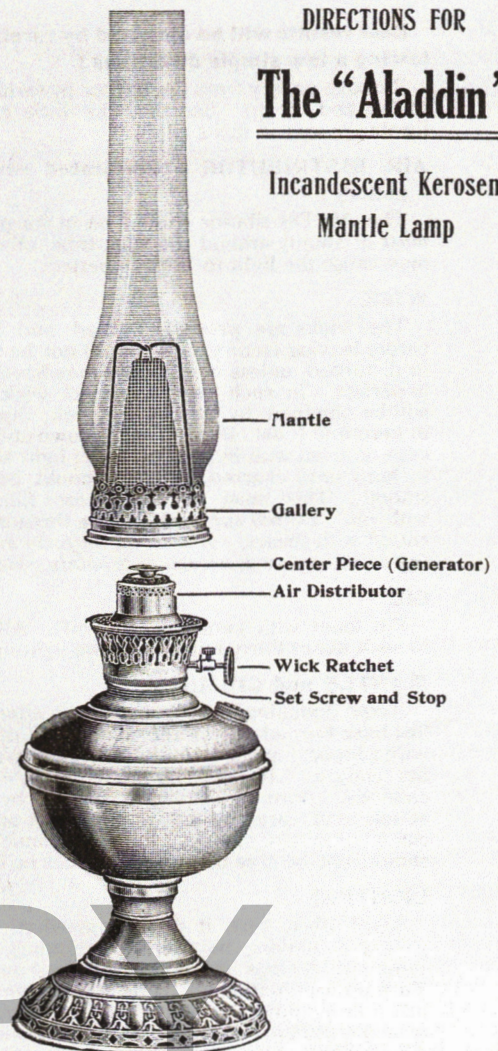
Further information desired about the "ALADDIN" Lamp will be cheerfully furnished upon request, with enclosure of two cent stamp for reply.

The Mantle Lamp Company of America,  
CHICAGO, ILL. PORTLAND, ORE. WINNIPEG, CAN.

DIRECTIONS FOR

## The "Aladdin"

Incandescent Kerosene  
Mantle Lamp



Model #1 - No form #  
- 3 cities  
Note fonts used are all same as  
on all three #2 booklets, including  
drawings, headers & text  
No evidence of folding on original

**Best results will be obtained by carefully following a few simple directions :**

Remove gallery from the burner by turning same to left and lift up. See that the little generator (center piece) is in its place.

**AIR DISTRIBUTOR (Perforated removable gallery)**

The Air Distributor should be in its place. It *must* fit snugly around the wick tube. otherwise it may cause the light to burn imperfect.

**WICK**

The wicks are properly burned and adjusted before leaving factory, and should not be trimmed or disturbed, unless in shipping they have become imperfect. In such case a perfect wick surface will be obtained by turning up wick, dipping top in kerosene (coal oil), turn same down until lowest edge is even with inner wick tube; light and allow to burn until charred, when it should be rubbed smooth. This must be done before filling lamp with oil. *Do not cut wick.* Little threads may be cut off with shears. *A smooth, uniform and slanting wick surface is necessary to obtain good results.*

**OIL**

Fill fount with kerosene (coal oil). Allow wick to soak about thirty minutes before lighting.

**MANTLE and CHIMNEY**

Avoid touching mantle before or after coating has been burned off. Take mantle out of box by wire support; place it on burner gallery so that it fits snugly. It must be perfectly in center of chimney. Burn off coating on mantle by lighting at top, and carefully follow directions on mantle can as to care of mantle. Put on chimney, which should not be less than twelve inches in height.

**LIGHTING**

Light wick, turn it down somewhat. Put on gallery containing mantle and chimney, turning same until it stops and is firmly locked on burner. Turn up wick until blue flame appears and stands just a little above the center piece (generator). If turned a little too high, the blue flame will flutter. Allow light to burn in blue flame until flame

appears to leave wick entirely, when light may be carefully turned up until mantle fills one-half, when it will gradually produce its maximum light. The adjusting screw on lever may then be fastened so wick will not be accidentally raised above this point.

Like any kerosene lamp, the maximum light cannot be obtained at once, as due allowance must be made for light working up. If light is turned to its maximum before it is hot enough to make sufficient gas to carry a steady floating blue flame, it will smoke. After burner is properly heated, the light will be absolutely steady. Every time the wick is turned up, you put on more heat and must wait until the generator has taken the extra heat and produces the extra gas. This is what is usually called "creeping or working up."

Should the light burn brighter on one side than on the other, this may be caused by the mantle not being on straight or the inner wick tube might be accidentally sprung to one side, thus binding the wick on one side and not allowing equal distribution of oil, or what is more probable, the air distributor is not down on one side. If the wick tube binds wick, unscrew burner and *gently* spring wick tube into its right position. If the generator (little center piece) should be pushed to one side, or is too high or too low, it may cause the light to burn red on one side. It should be in the center and at the proper height from wick tube. The correct distance between lower flange of center piece (generator) and top of inner wick tube is 5-64ths of an inch.

Should you carelessly smoke the mantle until solid soot, same may be removed by turning down light temporarily. By keeping a smooth, uniform and slanting wick surface, perfect results will be obtained. Remember, it will smoke if there are any projections on the wick, or if turned so that the proportion of gas exceeds the proportion of air that it is set for (The air is a fixed quantity, the gas you regulate.) *Do not allow light to burn low below the point at which a good blue flame is obtained, as this may cause the burner to become overheated.*

**CLEANING**

Use cloth in brushing carbon from wick, brushing one way and toward inner wick tube. If carbon is hard on the burner outside of wick, same