



The Mystic Light of the Aladdin Knights

Volume 43 No. 1

Aladdin is The Magic Name in Lamps

September 2014

Aladdin Student Lamp # 110 with 206 Shade Bill Courter

An Aladdin Student Lamp #110 with 206 shade in near original condition was found in North Carolina. The lamp contained an original wick and was lighted in early years but not after the 1950s.

The lamp was bought by Herman Powell about 1955 for \$50.00. Two lamps were for sale but Herman could only afford one. He liked the lamp with "pretty shade." The lamps were being sold from a home in Valdese, NC, off Enon Road, not far from Drexel, NC.

I purchased the lamp from Nancy Whicker, Herman Powell's daughter, in Charlotte, NC.

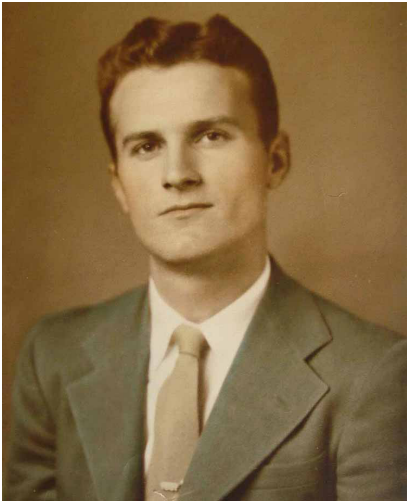
Nancy remembered she was about 13 at the time Dad came home with the lamp with pretty shade. She thinks the lamp was never used in their home, just enjoyed by her Mom & Dad over the years. Appears Herman bought a Lox-On chimney (*wrong!*) and Kone Kap Mantle (bag now gone) and perhaps tried to light the lamp without success, or at least poor results. There was no internet or source of collector information to help at that time. Surprising that the family never "electrified" or polished the lamp.

Herman and Nancy's Mom both worked at Drexel Furniture.

The significance of the lamp includes its original Old English finish and patena complete with 206 shade, Model 4 FS, Model 3 box gallery and original smoke bell.



Aladdin student lamp # 110 with 206 shade.



Herman Tate Powell bought the student lamp with "pretty" shade for \$50.00 in 1955.



Nancy's Mom (above) and Dad kept the lamp but never used it for kerosene light nor "electrified" it. They both worked for Drexel Furniture and Herman later became Drexel Town Manager.



Nancy Whicker kept her Dad's lamp bought in 1955 from a home near Drexel, NC. Bill Courter bought the lamp in 2014.

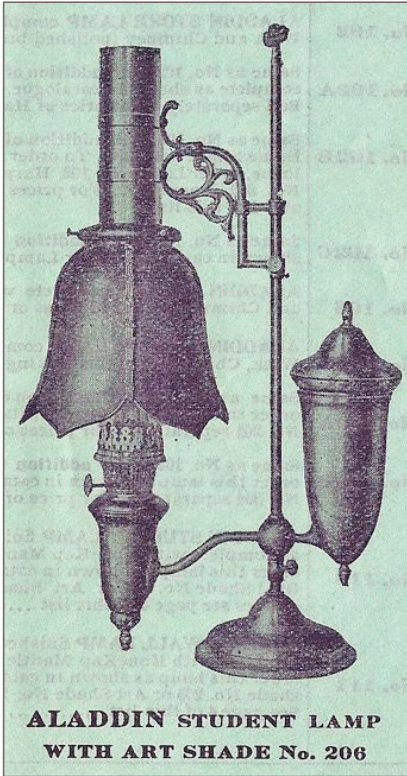


Student lamp after minor repair and cleaning by Ken Teter. The lamp was in the display room this year courtesy of Ken, its new owner.

Aladdin student lamp continued



Original smoke bell with the Whicker student lamp.



**ALADDIN STUDENT LAMP
WITH ART SHADE No. 206**

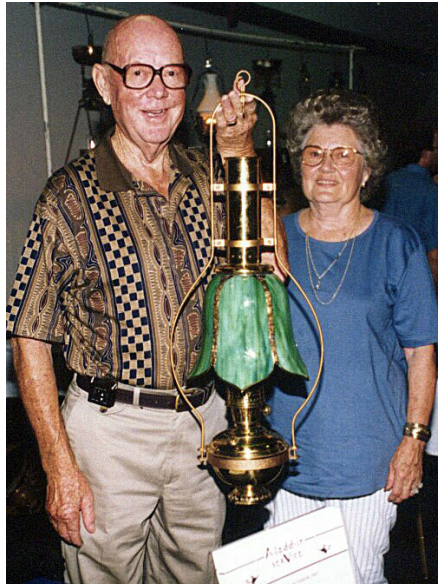
The 206 Art Glass Shade was illustrated on the cover page of the *Wholesale Price List*, Feb. 1, 1911. The lamp cost \$11.50 with choice of 205 shade (30 cents) or 206 shade (\$1.25 additional). The smoke bell was not illustrated or listed in the price list.

Chronology of Aladdin Art Glass Shades No. 206

Purpose—to document provenance and ownership of 206 shades found and purchased by collectors since 1995.



In 1995 Bill McIntosh found this shade on an electric lamp in Michigan.



In 1995 Clarence and Hester Satterfield, from Illinois, carried their Model 4 No. 113 narrow frame hanging lamp into the lamp show, Paducah, KY. They bought the lamp from a home in St. Charles, MO. Bill Courter bought the lamp from their son Dan in 2011.



Dick Reddaway bought the McIntosh shade at the Gathering auction in 1995. One panel was cracked.



In 2004 Dan Meily found this shade in PA.



In 1999 George Cahill bought a narrow frame 113 hanging lamp with 206 shade in Arkansas. The lamp had No. 3 star burner.



In 2004 Bill Lohmeyer bought the Meily shade at the Gathering auction in KY.



In 1999 Bill Craig in Iowa bought single chandelier No. 113 with 206 shade.

Bruce Wood (photo top R, page 20) researched the source of glass (Kokomo Opalescent Glass Co.) and the brass filigree (Ludwig Industries) to enable Rich Taylor, Glass FX to recreate the 206 shade in size and shape of original shades. The glass color varies in old as well as new shades, all of which were custom made.

Contact
 Bruce to
 buy the new
 206 shades:
 phone
 217-684-2908
 or
 email
 swood8888@
 aol.com

Bruce Wood with exhibit of 206 shades.

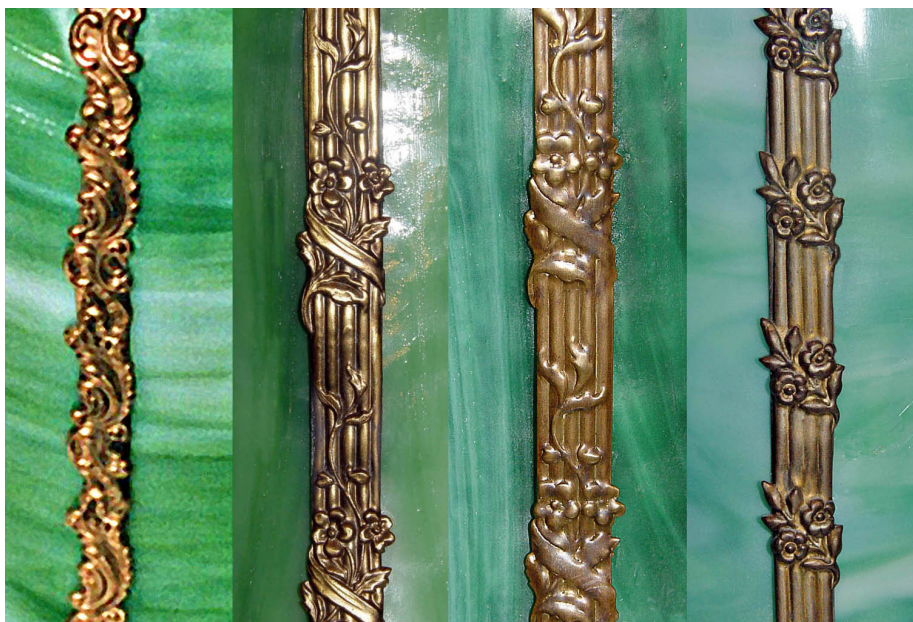


Satterfield 206 (L) compared with Glass FX (Champaign, IL) reproduction (R).



Satterfield 206 (L) compared with Whicker 206 (R). Note differences in glass color and filigree design.

Filigree Banding on 206 Shades



L to R: McIntosh shade Satterfield Shade

Glass FX Shades

Whicker Shade

The filigrees

The brass filigree found on the Satterfield shade was identified as pattern 7839 in 1911 Ludwig Industries Catalog (Brooklyn, NY). The "new" 7839 (Glass FX) lacks sharp detail. This pattern, with five ridges, is roughly 1/2 inch wide.

The McIntosh and Whicker patterns are approximately 3/8 inch wide. The Whicker filigree has four ridges.

The McIntosh and Whicker filigree patterns were not found in the Ludwig catalog.

The floral pattern of the Whicker filigree matches the Cahill, Craig and Meily shades, suggesting it is the earlier filigree of 206 shades. Furthermore, the Whicker pattern seems to match the filigree illustrated in the 1911 Aladdin Wholesale Price List.

The change to 1/2 inch wide filigree was likely due to improved strength and stability.

The shades

The shades vary somewhat in height depending on curvature and length of the glass panels. Overall the 206 shade is 8 1/2 inches tall. Some may approach 9 inches. The overall bottom diameter is about 9 inches (the McIntosh shade 9 1/2 inches and Glass FX 9 3/4 inches).

The reproduction top connector by Glass FX is dated, signed and is different shape than the original.

The art glass

The glass has been identified as "Kokomo Catspaw" made by the Kokomo Opalescent Glass Co., Kokomo, IN (still in business today). Catspaw refers to the rough pattern on the inside of the shade.

The color and orientation of pattern vary. The earlier shades are lighter in color, have more horizontal pattern and a hue toward blue. The Satterfield shade is deeper green with vertical pattern.

References

Kokomo Opalescent Glass and New #206 Art Glass Shade. *Mystic Light*, Nov. 2003.
Aladdin Art Glass 206 Shade. *Mystic Light*, March 2012.