



# IS IT REAL OR A REPRO?

LET'S FIND OUT.

By Chuck Talbott

# WHEN IT COMES TO COLLECTING, EDUCATION IS THE KEY.

1. Buy all the relevant literature you can.
2. Talk to other collectors.
3. Attend meets and gatherings when you can.
4. Don't believe everything you read on the internet.
5. Engage in networking.
6. Don't be "lazy." Study and do your research before putting up the post that says, "I just bought this, what is it? What's it worth?"
7. Oh, did I mention study????



# Aladdin Tall Lincoln drape

## Originals

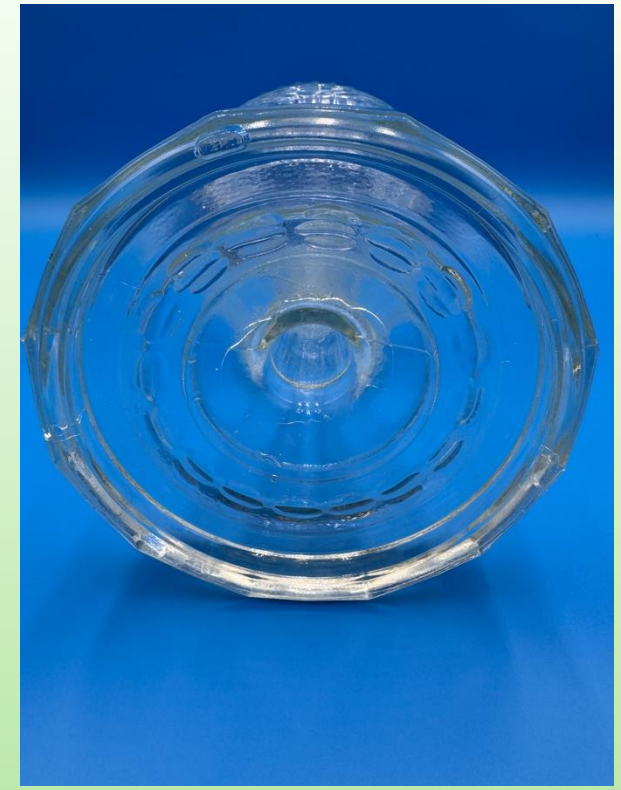
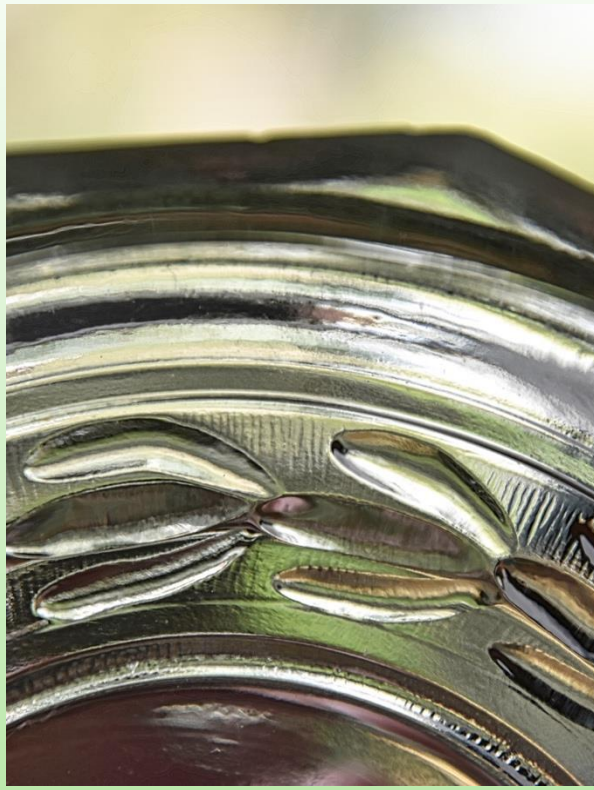
1. font and bowl are not glued together.
2. Fine mold lines will be present on the bottom of foot. These have not been reproduced.
3. Prominent rise in the glass around the oil fill.
4. Burner threads are in the UPPER part of the opening.



# Aladdin Tall Lincoln drape



WHAT DO YOU SEE???



**Aladdin Crystal Tall Lincoln drape**

# Aladdin Red Tall Lincoln Drape



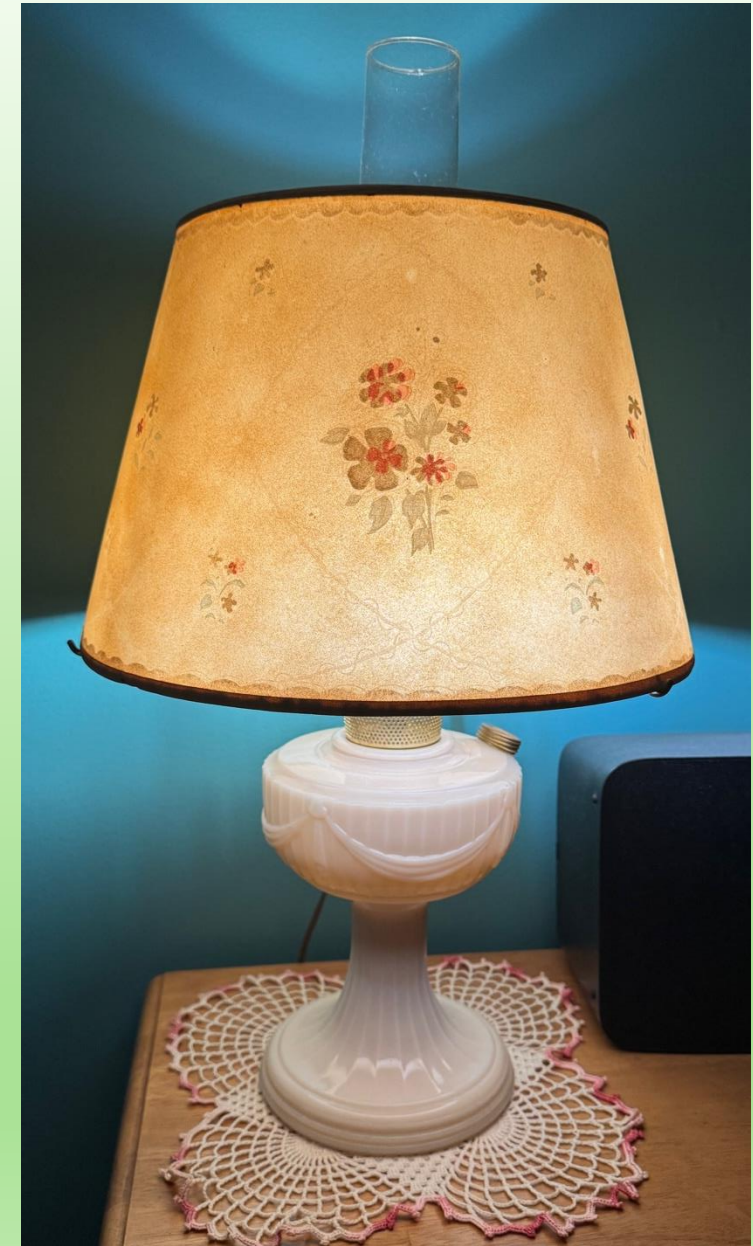
# Aladdin Short Lincoln Drapes

## Originals

1. Originals were only made for 1 year, 1939.
2. Metal burner threads are embedded into the glass.
3. No metal collar and no date or name on bottom

## Repro's

1. Only Ruby crystal B-62 and Transparent Amber crystal B-61 of the original colors were reproduced.
2. Repro's have a raised metal collar to hold the burner.
3. Repro's are two pieces, with the font being glued to the base. Look for the presence of glue or epoxy at that joint.



# Aladdin Short Lincoln Drapes



**What do your eyes tell you?**

# Aladdin Short Lincoln Drapes



**What stands out  
to you about  
these?**



# Aladdin #0500 Glass Footed Lamp

## Originals

1. No oil fill cap.
2. Glass collar with threaded insert.
3. Hollow foot.
4. Larger font than original
5. Only produced in alacite and crystal.
6. Came with brass model C burners.

## Repro's

1. Brass collar.
2. Has oil fill cap.
3. Solid foot, labeled Aladdin.
4. Smaller font.
5. Came in assorted colors.
6. Came with MAXBrite burners.



# Aladdin Vertiques



8 27 Pink Vertique  
w/ 11 1/2" shade w/ floral design



8 28 Yellow Vertique  
w/ 11 1/2" shade w/ floral design



8 29 Teal Vertique  
w/ 11 1/2" shade w/ floral design

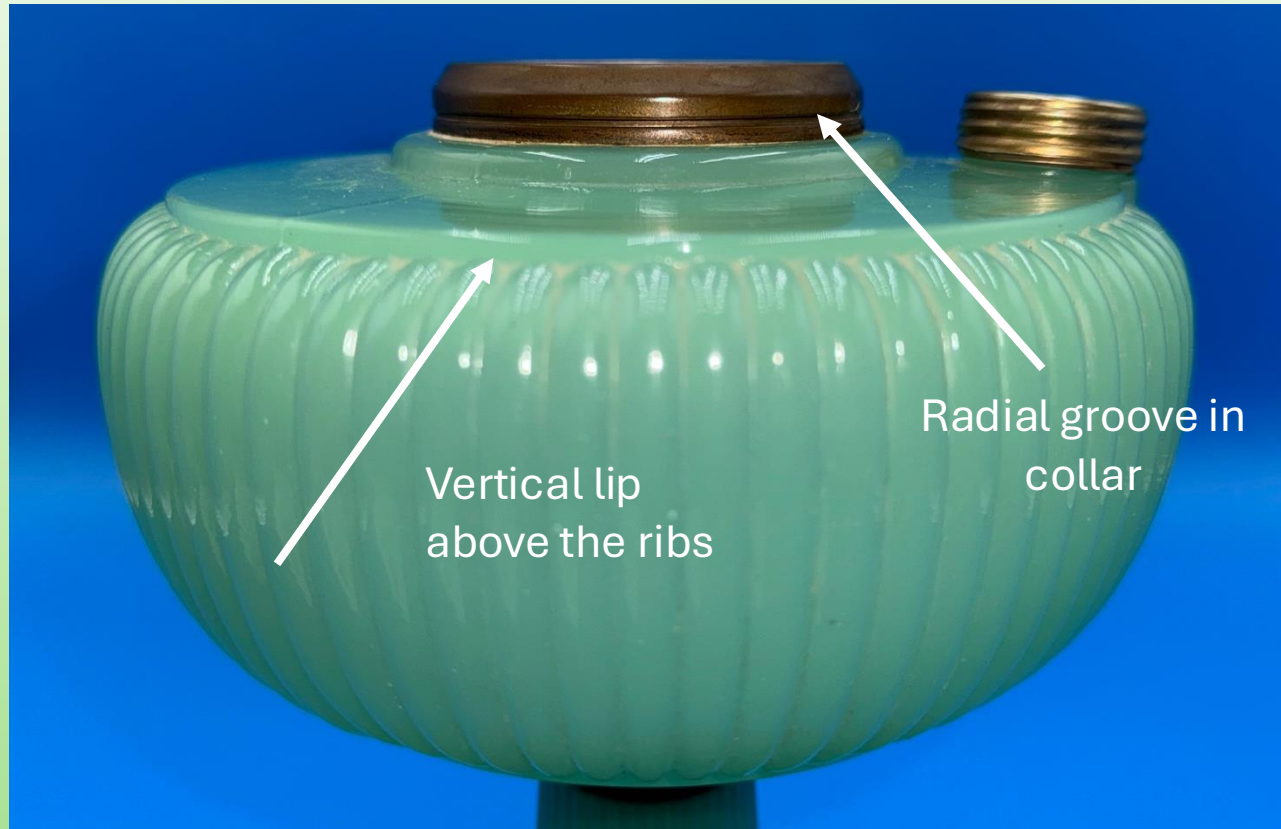


8 30 White Vertique  
w/ 11 1/2" shade w/ floral design

Chuck Talbott

Chuck

# Aladdin Vertiques



1. Original B-92 and B-87 have a radial groove in the collar.
2. All originals have a prominent vertical lip above the ribs.



# Aladdin Vertique Reproductions

## Repros

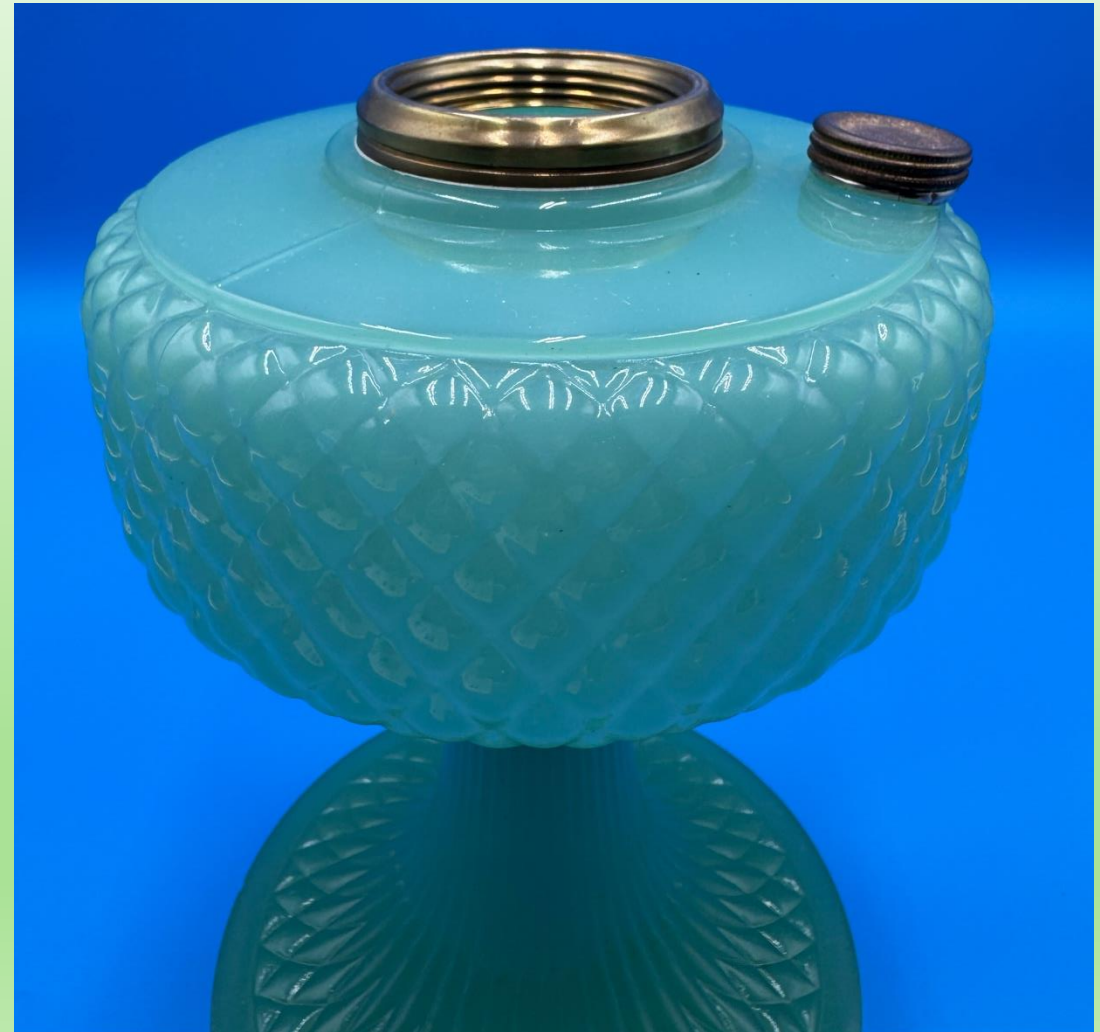
1. Flat rim, no verticle edge above the ribs.
2. Colors not produced in 1938
3. Blue moonstone appears "close" to the original green MS
4. No radial groove in collar.



# Aladdin Quilt B-86 Green Moonstone

## Originals

1. Original colors were White Moonstone, Green Moonstone, White/Black Moonstone and White/Rose Moonstone.
2. Original Quilt collar has a radial groove.
3. Original is half inch shorter than the reproductions.



# Aladdin Quilt Reproductions

## Repros

1. Colors not made in 1937
2. Blue/green moonstone is similar to the original green moonstone.
3. Oil fill cap is taller.
4. Smooth collar.
5. Font squarer.
6. Points in the pattern are more pronounced
7. New lamp is one half inch taller.

