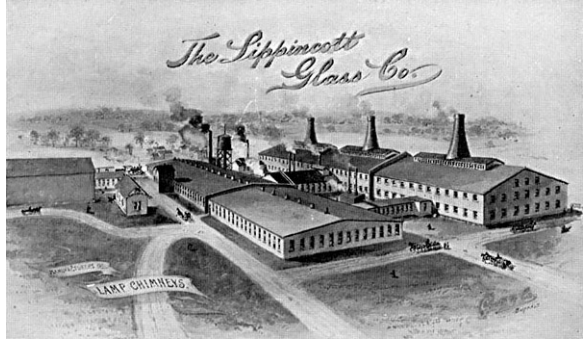


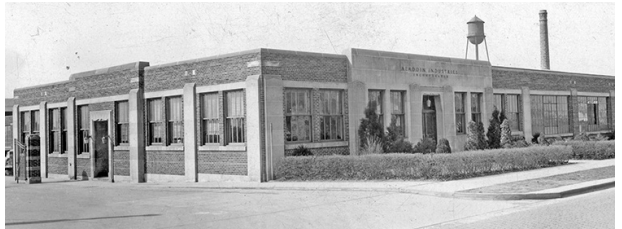
# Henry Hellmers, Glasshouse Superintendent Aladdin Industries, Inc. Alexandria, Indiana 1935 - 1942



Henry Hellmers, age 45 in 1942. The Hellmers family lived in a home at 401 Walnut St., in Alexandria.



Glass Finishing Building.



Aladdin office and mantle building on Washington street.



Aladdin glassworkers special meeting and buffet lunch in 1973. Henry Hellmers, seated far right, came from Pennsylvania to meet with the glassworkers and retirees.

In 1926 The Mantle Lamp Company purchased the Lippincott glass factory in Alexandria, Indiana to manufacture chimneys and shades. By 1930 the company was making Aladdin glass kerosene lamps and electric lamps. Prior to then, Aladdin lamps were primarily nickel-plated brass and the company purchased most of the lamp components.

The first glass lamps were made of clear crystal that was usually color decorated on the inside or outside of the lamp base. Sometimes other surface decorations such as iridescence or color mottling were applied in addition. Later, kerosene lamps were made of colored crystal, all of which were ordinary soda-lime glass. Aladdin's chimneys were made of heat resistant borosilicate glass. Aladdin started making moonstone glass in 1934 and, it was of variable quality.

Aladdin glass was made in day tanks or large continuous tanks. Colored glass was mostly made in day tanks of two- to three tons capacity. Eight hundred, or more, lamps were made from one tank, up to 2,500 lamps in a 24-hour period. The glass was intended for utility purposes to make lamp bases. Cost was of primary concern and Aladdin glass was not the same quality as pot glass made by other companies at the time. Aladdin developed unique colors for their primary market in rural areas where improved lighting was needed. The range of glass colors provided reason to suggest a different lamp in every room.

Jesse Said (1927-1931) and Floyd Pruden (1932-1934) were the first glasshouse superintendents. The company hired Henry Hellmers in 1935 to improve Aladdin's glass. He was in charge of batch mixing, colors, production and work assignments.

Hellmers was a master of colored glass. His 14-years previous experience with Akro Agate and the Cambridge Glass Company had

established his credentials in the glass industry. He had made glass for marbles, children's dishes, and some of the most popular Cambridge glassware of the time.

Hellmers built a longer 10 Ton continuous glass tank for making chimneys, cutting rejects by 25%.

### **Trade Names of Aladdin's Glass**

Marketing personnel gave trade names to Aladdin's glass to give it identity in the market. These names were published in the sales brochures and catalogs but were not well known by the glassworkers who made it.

Electric lamps made of a colorful marble-like glass in 1933 are not common; kerosene vase lamps are rare.

Today, collectors of Aladdin lamps usually refer to lamps by their style or sales number (ie. B-88).

### **Venetian Art-Craft (1930-1932).**

This was clear soda-lime glass given a fancy name for kerosene vase table lamps. The vases were decorated in green, blue, peach, orange, red and ebony. The colors were permanently fired on the glass.

### **Alpha Art-Glass (1932-1933).**

This also was clear crystal glass given another fancy name for kerosene table lamps. The lamp fonts were decorated on the outside in satin white, green, peach, and old rose. Kerosene vase lamps were decorated in many colors.

### **Beta Crystal Glass (1933-1953).**

This name was used to describe the clear, green, amber and ruby kerosene lamp fonts that became so popular in rural areas. The fonts were not color decorated. Some crystal lamps were called "Art Glass" from 1939 to 1941. Excellent quality clear crystal electric lamps were also made in the 1930s, but the name "Beta Crystal" was not printed in the electric catalogues.

**Moonstone Art Glass (1934-1938).**

Aladdin made many styles of moonstone electric and kerosene lamps. The kerosene lamps were described as "Moonstone Art Glass" and cost slightly more than the Beta Crystal lamps. The electric lamps were simply called "Moonstone" until the name Aladex was coined.

**Aladex (1935 - 1938).**

Aladex was the trade name for Aladdin's moonstone electric lamps. The name is rarely found in printed literature of electric lamps, although moonstone electric lamps and moonstone kerosene lamps were made for many years. Perhaps the development and popularity of Alacite in 1939 explains why the Aladex name was dropped.

**Velvex (1935-1938).**

Velvex is a moonstone glass mottled with black or other colors. Four styles of electric lamps were made of Velvex during a four-year period. Vases were made for less than one year. Some 18 or more different sizes and shapes of vases have been found and Velvex stickers may be found on some of them. The Velvex lamps and vases are eagerly sought by collectors.

**Opalique (1938-1940).**

Opalique is a slightly opalescent glass that is often decorated on the inside or outside to accentuate the color. The opalescence of Opalique is intensified in thicker portions of glass electric lamps. Therefore, its characteristics are best appreciated in heavier artistic designs.

Electric lamps and the glass figurines show striking opalescence in the body portions and are highly prized by collectors. Lamp figures were drilled for fittings. Figurines were not drilled.

No standard production of kerosene lamps was made in Opalique.



**B-84 Beehive  
White Moonstone.**

**G-63-10 Aladex  
Moonstone  
table lamp 1935.**



**G-84 Velvex table  
lamp 1936.**



**G-18 Opalique  
boudoir lamp 1939.**



**G-16 Opalique  
figurine.**

### **Alacite (1939 - 1951).**

Alacite was the name and trademark for Aladdin's most popular and best known glass. Alacite was used extensively for electric lamps and three styles of kerosene lamps over the nine-year period that the glass was in production. Alacite was not made during the war.

Dishware items such as ash trays, nut bowls, egg plates, candle holders, wall switch plates, book ends, and divided serving dishes were also made of Alacite and these products are relatively scarce. Most were marked "Alacite by Aladdin" in the mold or by a paper label.

Many electric table lamps with night lights and deep sculpture relief were made of Alacite. Floor lamps with Alacite night lights were also popular. During the first year, 27 different designs were introduced. More followed each year as the glass proved popular in the retail trade. There are over 500 different Aladdin electric glass table lamps, many of which were made of Alacite glass. The lamps are widely collected and used in homes today.

Collectors have observed a similarity of Crown Tuscan and Alacite but the Cambridge Glass Company did not make electric lamps for Aladdin. The similarity rests with the fact that Henry Hellmers developed both of these highly collectible glasses.

Hellmers stated that Alacite was one of three similar opal glasses that he developed. The others included Ivory for Akro Agate in 1928 and the glass named Crown Tuscan by the Cambridge Glass Company in 1930.

Alacite is an opal glass that shows characteristic fiery color when strong light is transmitted through it. Alacite was described to "have the softness and tone of genuine ivory".



**B-60 Short  
Lincoln Drape  
Alacite 1939.**

The kerosene lamps introduced in 1939 were described as "Alacite Art Glass". The "Art Glass" tag was soon dropped, and most lamps were described as Alacite or Ivory Alacite.

Alacite made prior to World War II contained uranium and it produces a characteristic greenish-yellow glow under black light.

The use of uranium as a coloring agent was eliminated from the formula after the war. Postwar lamps vary considerably in quality and color from white to pink and sometimes tan.



**G-233 Alacite table lamp 1941.**

## Brief Summary

### Henry Hellmers Career 1921 – 1970

- 1921 - Akro Agate, Clarksburg, WV  
Colors for marbles
- 1930 - Balmer-Westite - Weston, WV  
Bathroom fixtures, ash trays
- 1930 - Cambridge Glass Co. - Cambridge, OH  
Commercial Selenium Ruby  
Developed Heatherbloom  
Developed Crown Tuscan
- 1932 - Akro Agate  
Glass for toy dishes  
Close cup handles, reduce cost  
Developed Ivory glass
- 1935 - Aladdin Industries - Alex, IN  
Glass colors for lamps  
Developed Alacite  
Design continuous glass tank
- 1942 - Lancaster Lens - Lancaster, OH  
Glass for signal lenses  
Wing lights for aircraft
- 1946 - Owen-Corning Fiberglass, Newark, OH
- 1949 - Glass Fibers Co. - Waterville, OH  
Glass fibers for insulation
- 1952 - Pittsburgh-Corning, Port Allegany  
Desin glss furnaces

### 1962 - Consulting

#### Heisey

Made Alexandrite

#### Erickson Glass

Match glass colors for early  
American reproductions

#### L. J. Houze

Marbleized glass for steering  
wheel knobs  
Uranium vaseline glass

#### Economy Glass

Spanish Red tumblers

### More Retirement Consulting

Alley Agate co.

Louis Glass Co.

Fostoria Glass Co.

Federal Glass Co.

## Donate Alacite Corning Museum



On October 14, 1982 J. W. Courter assisted by Ann Hellmers, and family, donated an Alacite Short Lincoln Drape lamp and an Alacite nut bowl to the Corning Museum. L to R: Jane Shadel Spillman, curator of American Glass, Ann Hellmers and Dwight P. Lanmon, Director of the Corning Museum.



Relatives of Henry Hellmers. L to R: Mae, Dean and Bill Jensen with Helen Adams.



Relatives of Henry Hellmers at the Corning presentation: L to R: Mae Jensen, Helen Adams, Ann Hellmers and Robert Hellmers.



Robert & Joyce Hellmers with Ann Hellmers.

## Obituary

### Henry T. Hellmers 1897 – 1978

Henry T. Hellmers, 80, of 102 Katherine St., Port Allegany, died last Tuesday evening (March 7, 1978) in Port Allegany Community Hospital following a short illness.

Born May 12, 1897 in New York City, he was the son of Deitrich and Anna Hellmers. He married the former Mary Sherman on Oct. 7, 1922 in Clarksburg, W.Va. She survives.

Mr. Hellmers had lived in Port Allegany for 27 years serving as a tank engineer for the Pittsburgh-Corning Corp. from 1951 until his retirement in 1965.

He was a member of the First Lutheran Church of New York City, N.Y.; the F. & A.M. Lodge of Clarksburg; the Arnold Chapter F. & A.M. of Port Allegany; the Coudersport Consistory; the Potter Commandery; the Frank Burt Post of the American Legion; and the Pittsburgh-Corning Retired Employees Association.

Also surviving are one daughter, Ann Hellmers of Port Allegany; one brother, Karl Hellmers of Equinunk; and one sister, Mrs. Margaret Williams, Franklin.

Private funeral and committal services will be held at the convenience of the family. Funeral arrangements are under the direction of the Walter Funeral Home.

### Mary E. Hellmers 1899 - 1981

Mary E. Hellmers, 81, of 102 Katherine St., Port Allegany, died Monday morning (June 29, 1981) at Port Allegany Community Hospital, following a short illness.

She was born Aug. 9, 1899, in Cazenovia, N.Y., a daughter of John and Elizabeth Clements Sherman. She married Henry T. Hellmers Oct. 7, 1922 in Clarksburg, W.Va. He died March 7, 1978.

Mrs. Hellmers was a member of the Trinity United Methodist Church and the National Wildlife Association. Surviving is one daughter, Ann S. Hellmers at home.

There will be no visitation. Memorial services will be held at the convenience of the family. Burial will be in Evergreen Cemetery, Cazenovia.

Funeral arrangements are under the direction of the Howard A. Walter Funeral Home.

### Ann S. Hellmers 1924 - 1982

Ann S. Hellmers, 58, of 102 Katherine St. Ext., was found dead at her home on Saturday (October 23, 1982).

Born March 10, 1924 in Clarksburg, W.Va., she was the daughter of Henry T. and Mary E. Sherman Hellmers.

She attended high school in Alexandria, Ind., and received a Bachelor of Science degree from Ripon College, Ripon, Wisc. She later did graduate work at St. Bonaventure University, Allegany, N.Y.

Miss Hellmers was employed as an occupational therapist for Poly Clinic in Harrisburg, retiring as chief therapist in 1972.

She is survived by several cousins.

There will be no visitation. Private funeral services will be held at the convenience of the family. Burial will be in Evergreen Cemetery, Cazenovia, N.Y.

Arrangements were under the direction of the Robert J. Hartle Funeral Home.

Obituaries from Port Allegany newspapers

### Youths Apprehended Following Homicide



STATE POLICE VAN is pictured in the driveway of Hellmer's residence, 102 Katherine St. on Sunday afternoon, as investigation continued into the death of Ann Hellmers, found dead by police on Saturday evening after neighbors became concerned over lack of activity at the residence. —Davenport Photo

### Judge Orders Two Young Men Tried As Adults In Ann Hellmers Murder Case

Port Allegany newspaper